

Lire Developer's Manual

Joost van Baal

Egon L. Willighagen

Francis J. Lacoste

Lire Developer's Manual

by Joost van Baal, Egon L. Willighagen, and Francis J. Lacoste

Copyright © 2000, 2001, 2002, 2003 Stichting LogReport Foundation

This manual is free software; you can redistribute it and/or modify it under the terms of the GNU General Public License as published by the Free Software Foundation; either version 2 of the License, or (at your option) any later version.

This is distributed in the hope that it will be useful, but *without any warranty*; without even the implied warranty of *merchantability* or *fitness for a particular purpose*. See the GNU General Public License for more details.

You should have received a copy of the GNU General Public License along with this manual (see COPYING); if not, check with <http://www.gnu.org/copyleft/gpl.html> (<http://www.gnu.org/copyleft/gpl.html>) or write to the Free Software Foundation, Inc., 59 Temple Place - Suite 330, Boston, MA 02111, USA.

Revision History

Revision 1.3beta1 \$Date: 2003/04/03 14:43:41 \$

\$Id: dev-manual.dbx,v 1.75 2003/04/03 14:43:41 vanbaal Exp \$

Table of Contents

Preface	i
What This Book Contains	i
How Is This Book Organized?	i
Conventions Used	i
If You Don't Find Something In This Manual	i
I. Lire Architecture	i
1. Architecture Overview	1
Lire's Design Patterns	2
Log File Normalisation	2
Log Analysis	4
Report Generation	6
Report Formatting and Other Post-Processing	8
Going Further	9
II. Using the Lire Framework	1
2. Writing a New Superservice	2
DLF Design	3
The DLF Schema	3
3. Writing New Service	4
Writing a Log File to DLF Converter	4
API for 2DLF Scripts	4
4. Writing a New Report	5
Report Information	5
Report's Display Specification	5
Filter Specification	5
Calculation Specification	5
5. Writing Advanced Reports	7
Using a Derived Schema	7
Writing Extension Reports	7
III. Developer's Reference	8
6. Lire Data Types	9
Lire Textual Elements	9
Profiling Attribute	9
title element	9
DocBook Elements	10
description element	10
7. Common Textual Elements to All XML Formats	11
Lire Data Types Parameter Entities	11
Boolean Type	11
Integer Type	11
Number Type	11
String Type	11
Timestamp type	12
Time Type	12
Date Type	12

Duration Type	12
IP Type	13
Port Type	13
Hostname Type	13
URL Type	13
Email Type	14
Bytes Type	14
Filename Type	14
Field Type	14
Superservice Type	14
Chart Type	15
Related Types	15
8. The Lire Report Configuration Specification Markup Language	16
The Lire Report Configuration Specification Markup Language	16
config-spec element	17
summary element	17
Parameter Specifications Elements	18
Common Attributes	18
boolean element	18
integer element	18
string element	19
service element	19
command element	19
file element	20
directory element	20
executable element	20
select element	21
option element	21
list element	21
9. The Lire Report Configuration Markup Language	22
The Lire Report Configuration Markup Language	22
config element	22
global element	23
param element	23
10. The Lire DLF Schema Markup Language	24
The Lire DLF Schema Markup Language	24
The dlf-schema element	25
extended-schema element	26
derived-schema element	26
field element	27
11. The Lire Report Specification Markup Language	29
The Lire Report Specification Markup Language	29
report-spec element	30
global-filter-spec element	30
display-spec element	31
param-spec element	31
param element	32
Filter expression elements	32

filter-spec element	33
value element	33
eq element.....	33
ne element.....	34
gt element.....	34
ge element.....	34
lt element.....	34
le element.....	35
match element	35
not element.....	35
and element.....	35
or element.....	36
Report Calculation Elements	36
report-calc-spec element.....	36
Common Attributes	37
group element	37
timegroup element.....	38
timeslot element.....	39
rangroup element.....	40
field element	41
sum element.....	42
avg element.....	43
max element.....	43
min element.....	44
first element	44
last element.....	45
count element	46
records element	47
12. The Lire Report Markup Language	48
The Report Markup Language.....	48
report element.....	49
Meta-information elements.....	49
date element.....	50
timespan element.....	50
hostname element	50
Annotations Elements	51
notes element	51
note element.....	51
note attribute	51
section element.....	51
subreport element	52
missing-subreport element	53
table element.....	53
table-info element	54
group-info element	54
column-info element	55
group-summary element.....	56
group element	57

entry element	57
name element	58
value element	59
Charts-related elements.....	60
image element	60
file element.....	60
13. Schemas Reference	61
Schemas for the database Superservice.....	61
DLF Schema for Database service.....	61
Extended Schemas for the database Superservice	63
Query Type Extended Schema for Database Superservice	63
Schemas for the dialup Superservice.....	63
DLF Schema for Dialup service	64
Schemas for the dns Superservice	66
DLF Schema for DNS service	66
Schemas for the dnszone Superservice.....	67
DLF Schema for DNS Zone service	68
Schemas for the email Superservice.....	70
DLF Schema for Email service.....	70
Extended Schemas for the email Superservice	74
Email Extended Schema for Email service	75
Schemas for the firewall Superservice.....	75
DLF Schema for Firewall service	75
Schemas for the ftp Superservice	79
DLF Schema for FTP service	79
Schemas for the msgstore Superservice	83
DLF Schema for Message Store service.....	83
Schemas for the print Superservice	86
DLF Schema for Print service.....	86
Extended Schemas for the print Superservice	88
Sheet Count Extended Schema for Print service.....	89
Schemas for the proxy Superservice	89
DLF Schema for Proxy superservice	89
Schemas for the syslog Superservice	95
DLF Schema for Syslog superservice.....	96
Schemas for the www Superservice	97
DLF Schema for WWW service.....	97
Extended Schemas for the www Superservice	100
Attack Extended Schema for WWW service	100
Domain Extended Schema for WWW service.....	101
Robot Extended Schema for WWW service	101
Search Engine Extended Schema for WWW service.....	102
URL Extended Schema for WWW service.....	103
User Agent Extended Schema for WWW service	104
Derived Schemas for the www Superservice.....	105
User Session Derived Schema for WWW service	105

IV. Lire Developers' Conventions	109
14. Contributing Code to Lire	110
15. Developers' Toolbox	111
Required Tools To Build From CVS	111
Accessing Lire's CVS.....	111
CVS primer	111
SourceForge.....	112
Mailing Lists.....	112
16. Coding Standards	113
Shell Coding Standards	113
Perl Coding Standards	113
17. Making Lire "Test-infected"	114
Unit Tests in Lire	114
PerlUnit.....	114
Writing Tests	114
Running Tests	114
Some "Best Practices" on Unit Testing	115
18. Commit Policy	116
CVS Branches	116
Hands-on example	116
Naming, what it looks like	116
Creating a Branch	117
Accessing a Branch.....	117
Merging Branches on the Trunk	117
19. Testing	119
20. Making a Release	120
Setting version in NEWS file, checking ChangeLog	120
Tagging the CVS	120
Building The "Standard" Tarball	120
Building The "Full" Tarball.....	121
Building The Debian Package	122
Building The RPM Package	123
Making sure the FreeBSD port gets updated.....	124
Uploading The Release.....	124
The LogReport Webserver	124
Advertising The Release.....	125
SourceForge	125
Freshmeat.net.....	125
21. Website Maintenance	126
Documentation on the LogReport Website	126
Publishing the DTD's.....	126
22. Writing Documentation.....	127
Plain Text	127
Perl's Plain Old Documentation: maintaining manpages	127
Docbook XML: Reference Books and Extensive User Manuals	127
UML Diagrams.....	128
UML Editing.....	128
Diagram Types	128

V. Implementation Details	129
23. Report Generation: AsciiDlf	130
24. Issues with Report Merging	131
25. Overview of Lire scripts.....	134
26. Source Tree Layout	136
Glossary	137

List of Tables

11-1. weekly overview	39
-----------------------------	----

List of Figures

1-1. Log Processing in the Lire's Framework.....	1
1-2. The Log Normalisation Process	3
1-3. The Log Analysis Process	4
1-4. Report Generation Process	6
1-5. XSLT Processing of the XML Report	8
1-6. Processing of the XML Report Using The APIs	9

List of Examples

11-1. timeslot with 1d unit.....	39
11-2. timeslot with 2m unit.....	39
1. DNS DLF Excerpts	137

Preface

Log file analysis is both an essential and tedious part of system administration. It is essential because it's the best way of profiling the usage of the service installed on the network. It's tedious because programs generate a lot of data and tools to report on this data are often unavailable or incomplete. When such tools exist, they are generally specific to one product, which means that you can't compare e.g. your Qmail and Exim mail servers.

Lire is a software package developed by the Stichting LogReport Foundation to generate useful reports from raw log files of various network programs. Multiple programs are supported for various types of network services. Lire also supports various output formats for the generated reports.

What This Book Contains

This book is the *Lire Developer's Manual*. Its purpose is to present Lire as a log analysis framework. To this ends, it describes the architecture and design of Lire and contains comprehensive instructions on how to use it. Its intended audience is system administrators or programmers who want to extend Lire or want to understand its internals.

There is another book, the *Lire User's Manual* which describes how to install, configure and use Lire, as a "off-the-shelf" log analyzer. Its intended audience is system administrators who want to install and use Lire to gather information about the services operating on their network.

How Is This Book Organized?

This book is divided in five parts. Part I gives an overview of the architecture and design of Lire.

You will find in Part II information on extending Lire. In this part, you will learn how to add a new DLF format to Lire, write log file converters and add reports for a superservice.

Part III is a reference section which gives comprehensive details about the various XML formats used by Lire and gives in-depth descriptions of its various APIs.

Part IV is targeted at developers who want to participate in Lire's development. It contains information about CVS access, coding conventions, tools needed to build from CVS, release management and other aspects important to those part of the Lire development team. Furthermore, it gives some information on how to contribute code to Lire, as an external party.

Finally, Part V contains various implementation details that may be interesting to people wanting to learn more about Lire internals.

Conventions Used

If You Don't Find Something In This Manual

You can report typos, incorrect grammar or any other editorial problems to <bugs@logreport.org>. We welcome reader's feedback. If you feel that certain parts of this manual aren't clear, are missing information or lacking in any other aspect, please tell us. Of course, if you feel like writing the missing information yourself, we'll very happily accept your patch. We will make our best effort to improve this manual.

Remember, that there is another manual, the *Lire User's Manual* which contains comprehensive information on how to install, use and configure Lire. It also contains reference information about all of Lire's standard reports and supported services.

There are various public mailing lists for Lire's users. There is a general users' discussion list where you can find help on how to install and use Lire. You can subscribe to this list by sending an empty email with a subject of *subscribe* to <questions-request@logreport.org>. Email for the list should be sent to <questions@logreport.org>.

You can keep track of Lire's new release by subscribing to the announcement mailing list. You can subscribe yourself by sending an empty email with a subject of *subscribe* to <announcement-request@logreport.org>.

Finally, if you're interested in Lire's development, there is a development mailing list to which you can subscribe by sending an empty email with a subject of *subscribe* to <development-request@logreport.org>. Email to the list should be sent to <development@logreport.org>.

All posts on these lists are archived on a public website.

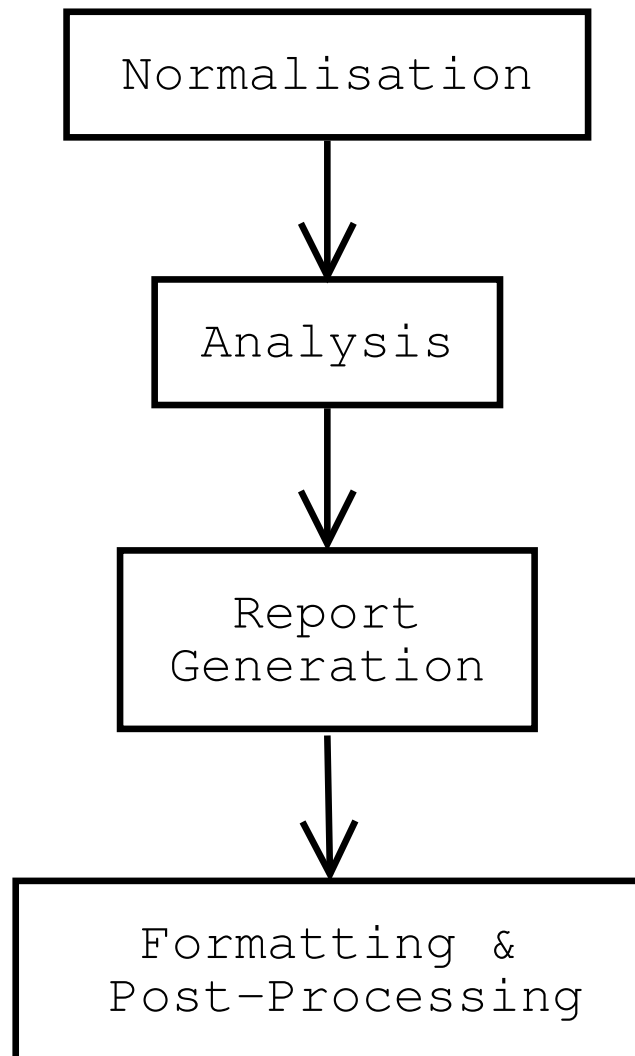
I. Lire Architecture

Chapter 1. Architecture Overview

From a developer's point of view, Lire intends to be the universal log analysis framework. To this end, it provides a reliable, complete, framework upon which to build log analysis and reporting solution. Lire, the tool, is a proof of the versatility and extendability of the framework as it is able to produce reports for many of the services that run in today's heterogeneous networks in a variety of output formats.

As a framework, Lire is the best choice to replace all those home-grown scripts developed to produce reports from all the log files from the little-known products or custom-developed programs that run on your system. Leveraging Lire framework will make those scripts a lot more versatile while not being really more complicated to develop. It will be easier to add new reports or to support multiple report formats.

Figure 1-1. Log Processing in the Lire's Framework



The Lire's framework divides log analysis in four different processes. The figure Figure 1-1 shows those four processes:

1. **Log Normalisation.** The first process normalise logs from different products into a generic format that can be shared by all products that have similar functionality. For example, log files from products as different as Apache and Microsoft Internet Information Server will be transformed into an identical format.
2. **Log Analysis.** In the analysis process, other information is created, inferred or extracted from the normalised data. For example, an analyser in the www superservice infers the browser used by the client from the referrer information.
3. **Report Generation.** The third process generates a report from the normalised and analysed data. This process is done by a generic report engine that computes the report based on specifications describing what and how the information should appear in the report. The report is generated in a generic XML format.
4. **Report Post-processing and Formatting.** The last process converts the generic report into a specific format like ASCII, PDF, HTML but other kind of post-processing (like charts generation) can also be accomplished in this stage.

Before going into a more detailed description of each of these processes, we'll introduce some of the common design's patterns that you'll find throughout the Lire's framework.

Lire's Design Patterns

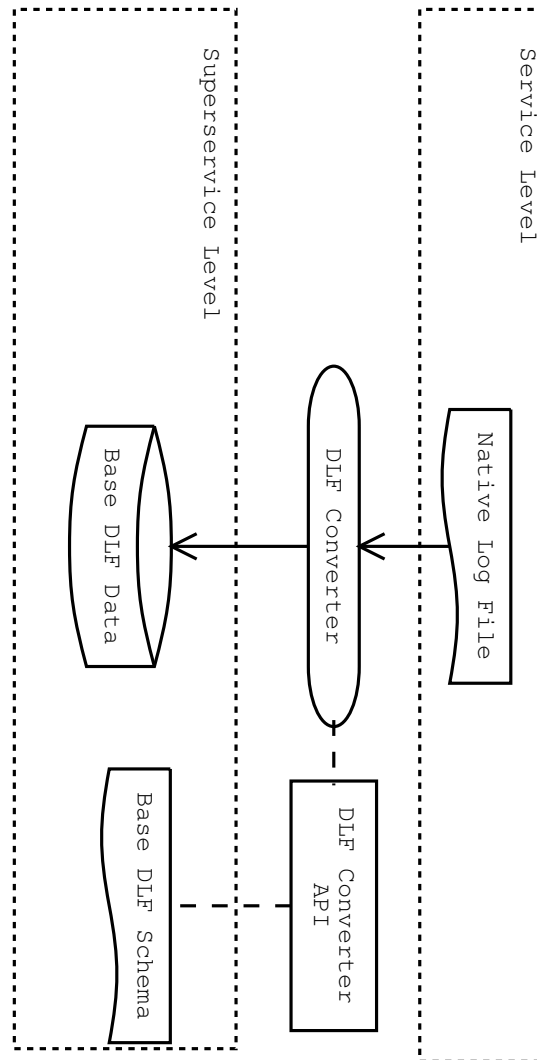
At the center of each of these processes is an XML based file format. Having things specified in data files makes it easier to extend. For example, the reports are built using a generic report builder which finds the instructions on how to build the reports in XML files. So this makes it easy to add new information to a report: you just have to write an XML file. The fact that there are a lot of tools to process XML files is also an interesting aspect. For example, emacs lovers will appreciate the help that its psgml module gives them in writing report specifications.

Another important aspects is that we tried to interoperate and to build upon other standards while defining our XML formats . The best illustration of this is that in all the XML file formats that Lire use, a DocBook subset is used for all elements related to narrative descriptions.

Another common aspect you'll encounter is that each of these processes and XML file formats come with an API to manipulate them, making it easy to add functionalities at each processing stage. APIs are also a good thing because, even if in theory an open file format somewhat constitutes an API, having libraries that provide convenient access to the file formats makes it a lot easier to write new components providing new functionalities.

Log File Normalisation

Figure 1-2. The Log Normalisation Process



The first process of the Lire log analysis framework is the log file normalisation process. That process is summarized in the Figure 1-2 figure. This process is centered around the *DLF* concept which is kind of a universal log format. DLF stands for Distilled Log Format. The concept is that each product specific log file is transformed into a log format that can be common to all the products providing similar functionalities. In Lire's terminology, a class of applications providing similar functionality (e.g. MTA's supplying email) is called a *superservice*. Still in Lire's terminology, the *service* from which the super is derived (e.g. postfix or sendmail) refers to the native log format that is converted in the superservice's

DLF. One can view the DLF as a table where the rows are the logged events and the fields are logged information related to each event.

Since the information logged by an email server is totally different from a web server, each superservice should have its own data models. In Lire, the data model is called a DLF *schema*. The DLF schemas are defined in XML files using the DLF Schema Markup Language. The schema describes what fields are available for each logged events.

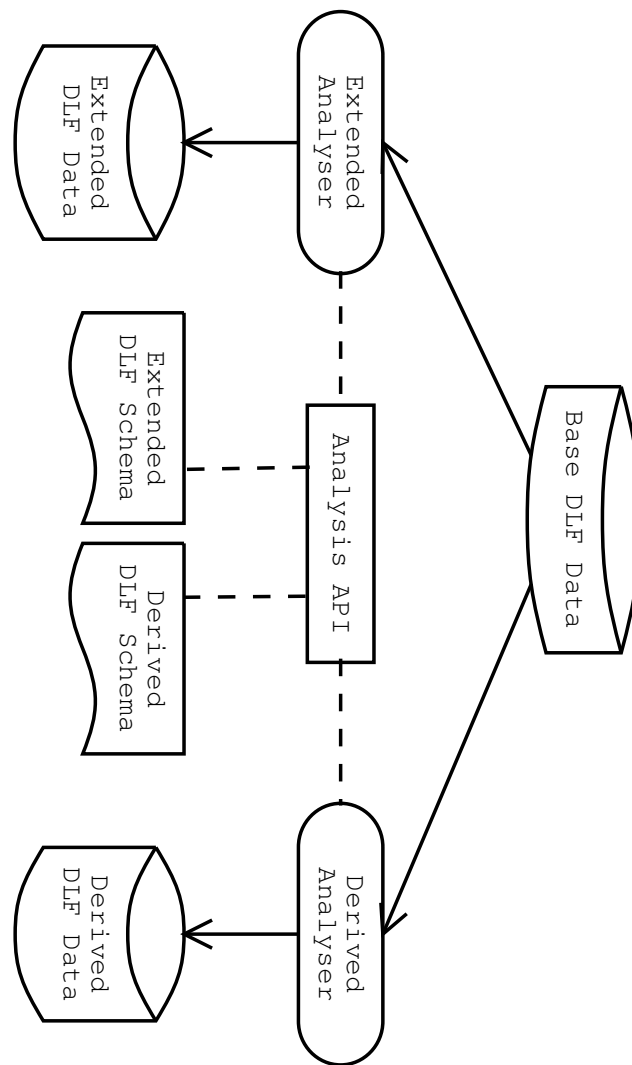
One interesting aspect of Lire, is that although the email DLF is used by all email servers, the email DLF data model isn't restricted to the lowest common denominator across the log formats supported by each email servers. In the Lire's architecture, the superservice's schema can represent the information logged by the most sophisticated product. When some part of the information isn't available in one log format, the DLF log file will contain this information and the reports that needs this information won't be included.

This architecture means that to support a new service, i.e. a new log format, in Lire you just need to write a plugin, called a DLF converter. This is just a simple perl script that parses the native log format and maps the information according to the schema.

Log Analysis

After normalisation, comes the analysis process. The analysis process responsibility is to extract, infer or derives other information from the logged data. Since the superservice's logged data is in a standard format, the analysers are generic in the sense that they can operate for all the superservice's supported log formats, if the product's was clever enough to log the information required by the analyser. The analysis process is shown in the Figure 1-3 figure.

Figure 1-3. The Log Analysis Process



Since each analyser can add information to or create a new DLF, each analyser will generate data according to special kind of schemas.

Lire's framework include two kind of analysers. The difference between the two resides in the mapping between the source data and the new data they generate. Extended analysers generate new data for each DLF record whereas derived analysers are used when the new data doesn't have a one-to-one mapping with the source data.

The analysers produce data according to a data model which is specified in other DLF schemas. There are *extended* schemas and *derived* schemas. An extended schema simply adds new fields to the base superservice's schema. For example, in the web superservice's schema, a lot of information can be

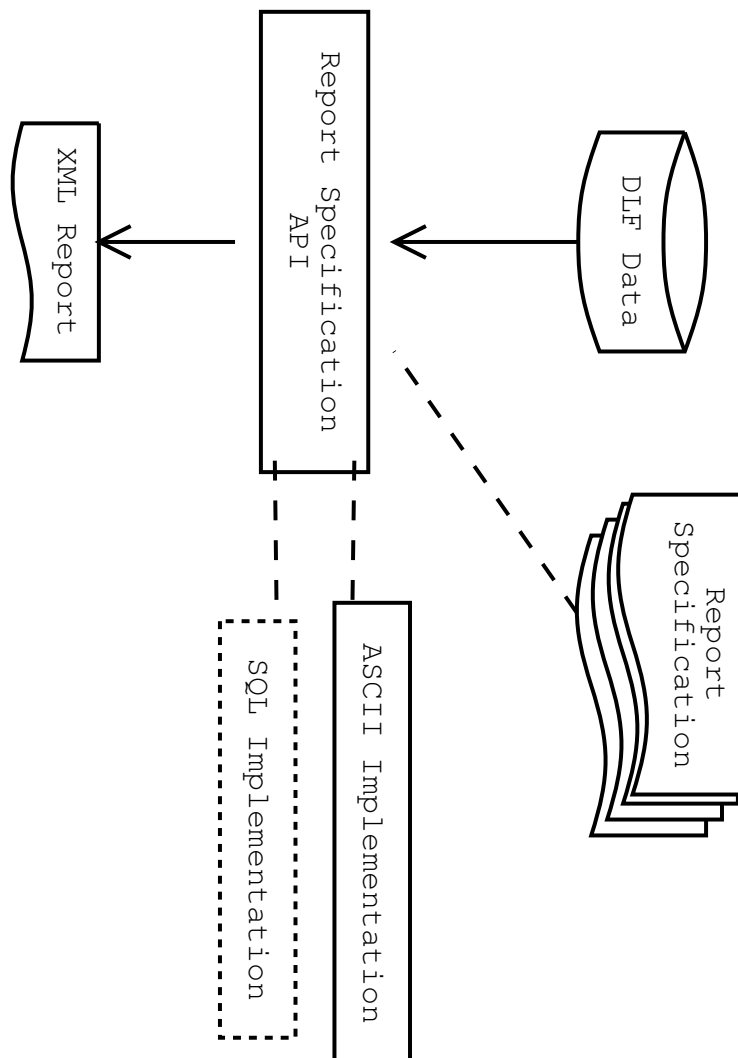
obtained from the referer field. From this information, it is possible to guess the user's browser, language or operating system. Those fields are specified in the www-referer extended schema; one analyser is responsible for extracting this information from the referer field.

But sometimes the analysis cannot just simply add information to each event record, an altogether different schema is needed then. For those cases, there is the derived schema. An example of the use of such a schema in the current Lire distribution is the analyser which creates user sessions based on the logged client IP address and user agent. This analyser defines the www-session derived schema.

Analysers are simple perl modules that receive the base superservice's DLF records and output DLF records in the extended or derived schema. The architecture supports cascading of schemas; this feature isn't used anywhere now.

Report Generation

Once you have all this data, it's time to generate some useful reports out of it. Lire's framework includes a generic report builder. What Lire calls a *report* is actually a *collection* of what one may understand as reports; Lire however speaks about a *subreports*. For example, the proxy's superservice report will contain subreports about the top visited sites, another subreport on the cache hit ratio, as well as several others. The subreports are defined using the *Report Specification Markup Language*. This markup language contains elements for several things: information regarding the schema on which it operates; descriptions that should be included in the generated report to help in the interpretation of the data; parameters that can be used to modify the generated report (for example, to generate a top 20 subreport instead of a top 10); a filter that selects the records that will be used for the subreport; and finally the operations that make up the subreport: grouping, summing, counting, etc. The report markup language covers most simple needs and there is an extension element as well as an API that can be used to hook in more fancy computations. There are no subreport specifications in the current distribution that make use of this feature yet, however. You can see an overview of this process in the Figure 1-4 figure.

Figure 1-4. Report Generation Process

The actual computation of the subreport is delegated to another module of the framework. Presently, the DLF concept is implemented as simple space delimited log files. This makes it very portable and very simple, but for huge amounts of log data this isn't necessarily the best solution. But it would be easy to switch to a database driven backend where the DLF records are hold in tables and the subreport specifications are mapped to SQL queries.

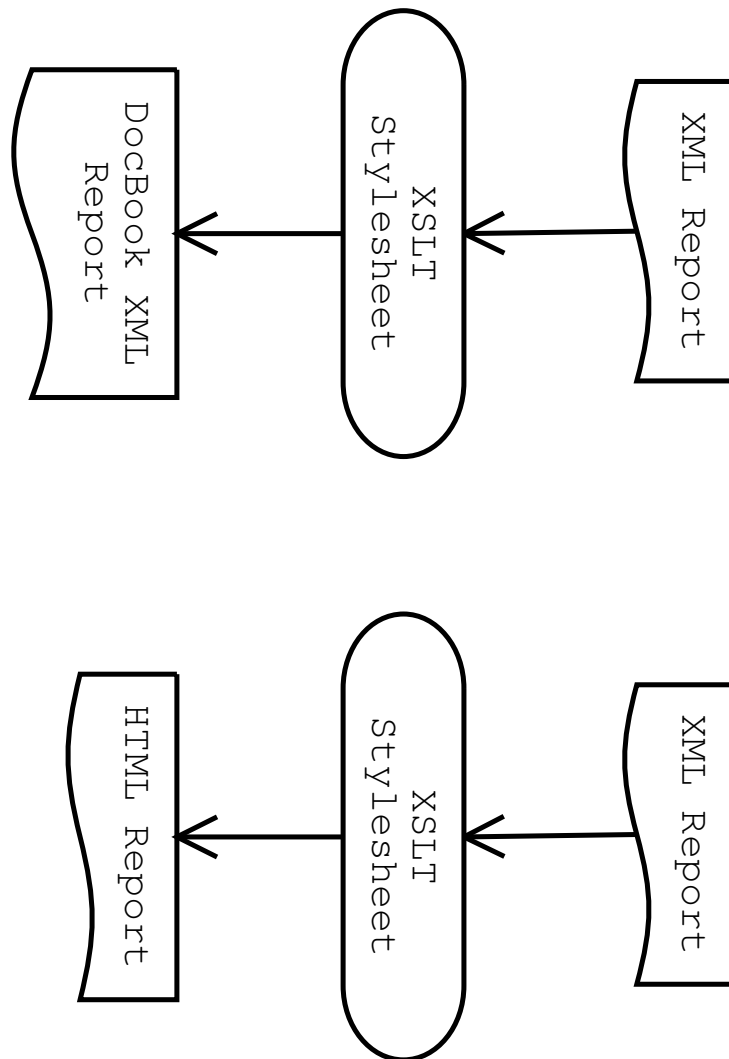
The generated report is another XML file that uses another markup language, this time called the Lire's Report Markup Language. An actual report contains the help descriptions from the report specifications, information on the subreport specifications used, as well as the actual subreport's data. Using another intermediary XML file as output format makes all sort of things possible in the formatting and

post-processing stage.

Report Formatting and Other Post-Processing

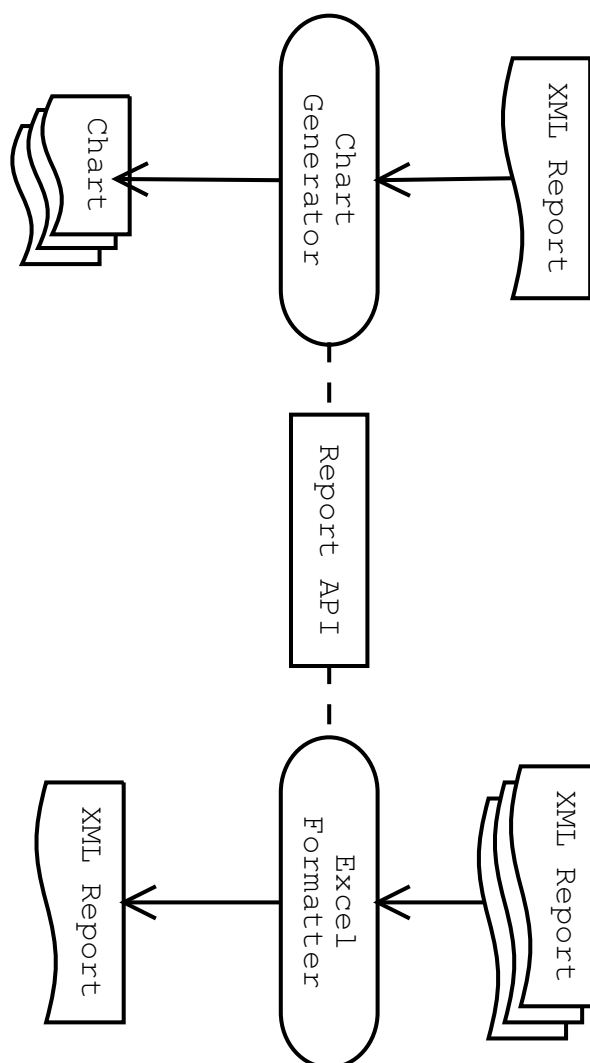
The last process works with the generic XML report. Using a domain-specific XML format for the generated format makes it easy for the framework to support multiple different formats. Supporting a new output format is just a matter of writing a new module that processes the XML report file.

Figure 1-5. XSLT Processing of the XML Report



There are many ways to do this. Of course, there is the XSLT way which can be used to format the report using stylesheets to convert to other XML formats. That's how we support the HTML, XHTML and PDF formats. Figure Figure 1-5 gives an example of such processing.

Figure 1-6. Processing of the XML Report Using The APIs



As shown in the Figure 1-6 figure, you can also process the XML files using the APIs to the XML report format. That's how charts generation and the Excel backend are implemented. There's actually two APIs to process XML reports; one is event based and the other is object based. That's making different styles of programming possible. That's the equivalent of the SAX vs DOM model in the XML world.

Going Further

As you can see from this overview, the Lire framework provides a powerful architecture to use for your log analysis needs. The architecture provides extensibility from log normalisation to post-processing of the reports. Exactly how to use the framework is the topic of the next part.

II. Using the Lire Framework

Chapter 2. Writing a New Superservice

Writing a new superservice involves several things:

1. Making new directories in CVS:

- `/service/<superservice>/`
- `/service/<superservice>/script/`
- `/service/<superservice>/reports/`

2. Adding several files:

- `/service/<superservice>/Makefile.am`
- `/service/<superservice>/reports/Makefile.am`
- `/service/<superservice>/script/Makefile.am`
- `/service/<superservice>/<superservice>.cfg`
- `/service/<superservice>/<superservice>.xml` This file specifies the DLF format of the superservice. Ideally, it should offer a place for each and every snippet of information which will ever be found in a logfile from a program which offers functionality defined by the superservice. This file should have documentation embedded; this will show up in this manual.

3. Writing service plugins (2dlf scripts):

- `/service/<superservice>/script/<service>2dlf.in`

4. Adapting several files:

- `/service/configure.in` (add the Makefiles and 2dlf script to AC_OUTPUT, to get them converted from `<service>2dlf.in` to `<service>2dlf`.)
- `/service/Makefile.am` (add the superservice directory to SUBDIRS, so that make gets run there too, when called from the root source directory.)
- `/service/all/etc/address.cf` (to make the new service known as a member of a superservice.)

5. Update Documentation:

- User Manual: Chapter "Supported Applications".
- Add manpages for scripts
- This document: add a referral to the superservice-schemas.dbx file, which gets build from superservice.xml.
- The User Manual: add referrals to superservice-reports-infos.dbx and superservice-filters-infos.dbx.

6. Update **lr_config**

DLF Design

The DLF Schema

Chapter 3. Writing New Service

Since Lire 1.1, adding a service is as simple as sticking your 2dlf script in `libexec/lire/convertors/` and registering it as belonging to a superservice in `address.cf`.

Writing a Log File to DLF Converter

API for 2DLF Scripts

Chapter 4. Writing a New Report

Writing a new report involves writing a report specification, e.g.

`/service/<superservice>/reports/top-foo-by-bar.xml`, and adding this report along with possible configuration parameters to `<service>.cfg`. E.g., to create a new report, based upon

`email/from-domain.xml`: copy the file `/usr/local/etc/lire/email.cfg` to

`~/.lire/etc/email.cfg`. Copy the file

`/usr/local/share/lire/reports/email/top-from-domain.xml` to e.g.

`~/.lire/reports/reports/email/from-domain.xml`. Edit the last file to your needs, and enable it by listing it in your `~/.lire/etc/email.cfg`.

Beware! The name of the report generally consists of alphanumerics and `'-'`, but the name of parameters may *not* contain any `'-'` characters. It generally consists of alphanumerics and `'_'` characters.

Report Information

Report's Display Specification

Filter Specification

For now, you'll have to refer to the example filters as found in the current report specification files. We'll give one other example here: specifying a time range.

Suppose you want to be able to report on only a specific time range. You could build a (possibly global and reused) filter like:

```
<lire:filter-spec>
  <lire:and>
    <lire:ge arg1="$timestamp" arg2="$period-start"/>
    <lire:le arg1="$period-end" arg2="$timestamp"/>
  </lire:and>
</lire:filter-spec>
```

When trying your new filter, you could install it in `~/.lire/filters/your-filter-name.xml`.

When `lr_dlf2xml` looks up a filter which was mentioned in the report configuration file, it looks first in `~/.lire/filters/`, and then in `.../share/lire/filters/`.

Calculation Specification

Chapter 5. Writing Advanced Reports

Using a Derived Schema

Writing Extension Reports

III. Developer's Reference

Chapter 6. Lire Data Types

Lire Textual Elements

This DTD module defines elements related that contains human-readable content in all the Lire DTDs.

This module will also imports some DocBook XML V4.1.2 elements for richer semantic tagging.

This module is also namespace aware and will honor the setting of *LIRE.pfx* to scope its element

The latest version of that module is 2.0 and its public identifier is -//LogReport.ORG//ELEMENTS Lire Textual Elements V2.0//EN.

```
<!--
  Make sure LIRE.pfx is defined. This declaration will be
  ignored if it was already defined.
-->

<!ENTITY % LIRE.pfx          "lire:"                >

<!ENTITY % LIRE.title        "%LIRE.pfx;title"      >
<!ENTITY % LIRE.description  "%LIRE.pfx;description" >
```

Profiling Attribute

Textual content may be profiled to suit the intended reader background. This is achieved through the use of the *userlevel* attribute which is available in all DocBook elements. This module restricts the set of values that this attribute can contains to two values: *normal* and *advanced*. You can tag paragraphs (or other elements) which contains more technical (or advanced) information with the *advanced* *userlevel* and they will only appear in the formatted report if the user asked for these.

```
<!ENTITY % userlevel.enum    "normal | advanced"    >
<!ENTITY % userlevel.default "normal"               >
```

title element

The *title* element contains a descriptive title.

This element represent some title in Lire. It can be used to give a title to a report specification or to specify the title of a report or subreport.

The content of this element should be localized.

This element doesn't have any attribute.

```
<!ELEMENT %LIRE.title; (#PCDATA) >
```

DocBook Elements

The standard para, formalpara and admonition elements (note, tip, warning, important and caution) are used as well as their content may be used.

```
<!ENTITY % docbook-block.mix
    "para|formalpara|warning|tip|important|caution|note">

<!ENTITY % DocBookDTD PUBLIC
    "-//OASIS//DTD DocBook XML V4.1.2//EN"
    "http://www.oasis-open.org/docbook/xml/4.1.2/docbookx.dtd">
%DocBookDTD;
```

description element

The description element is used to describe an element. It can be used to describe DLF fields, describe a report specification or include descriptions in the generated reports.

This element can contains one or more of the block-level DocBook elements we use.

The content of this element should be localized.

This element doesn't have any attributes.

```
<!ELEMENT %LIRE.description; (%docbook-block.mix;)+>
```


Chapter 7. Common Textual Elements to All XML Formats

Lire Data Types Parameter Entities

This module contains the parameter entity declarations for the data types used by all Lire DTDs.

All defined data types have a `<type>.type` parameter entity which defines their type as an XML type valid in an attribute declaration and a `<type>.name` parameter entity that declare their name.

Additionally, this module declares `<name>.types` parameter entities that group related types together.

The latest version of that module is 1.0 and its public identifier is `--LogReport.ORG//ENTITIES Lire Data Types V1.0//EN`.

Boolean Type

The bool type. It contains a boolean value, either 0, 1, f, t, false or true.

```
<!ENTITY % bool.type      "0 | 1 | f | t | false | true | yes | no">
<!ENTITY % bool.name      "bool"                                >
```

Integer Type

The int type can contains positive or negative 32 bits integer.

```
<!ENTITY % int.type        "CDATA"                                >
<!ENTITY % int.name        "int"                                  >
```

Number Type

The number type can contains any number either integral or floating point.

```
<!ENTITY % number.type     "CDATA"                                >
<!ENTITY % number.name     "number"                              >
```

String Type

The string type contains any displayable text string.

```
<!ENTITY % string.type          "CDATA"          >
<!ENTITY % string.name          "string"          >
```

Timestamp type

The timestamp type contains a time representation which contains the date and time informations. It can be represented in UNIX epoch time.

```
<!ENTITY % timestamp.type       "CDATA"          >
<!ENTITY % timestamp.name       "timestamp"       >
```

Time Type

The time type contains a time representation which contains only the time of the day, not the date. For example, this data type can represent 12h00, 15:13:10, etc.

```
<!ENTITY % time.type            "CDATA"          >
<!ENTITY % time.name            "time"           >
```

Date Type

The date type contains a time representation which contains only a date.

```
<!ENTITY % date.type            "CDATA"          >
<!ENTITY % date.name            "date"           >
```

Duration Type

The duration type contains a quantity of time. For example : 5s, 30h, 2days, 3w, 2M, 1y. (The authoritative list of supported duration types is coded in `Libre::DataTypes::duration2sec()`)

```
<!ENTITY % duration.type      "CDATA"          >
<!ENTITY % duration.name      "duration"        >
```

IP Type

The ip type contains an IPv4 address.

```
<!ENTITY % ip.type            "CDATA"          >
<!ENTITY % ip.name            "ip"             >
```

Port Type

The port type contains a port as used in the TCP to name the ends of logical connections. See also RFC 1700 and <http://www.iana.org/numbers.htm>. Commonly found in /etc/services on Unix systems.

```
<!ENTITY % port.type          "CDATA"          >
<!ENTITY % port.name          "port"           >
```

Hostname Type

The hostname type contains an DNS hostname. (It can also contains the IPv4 address of the host).

```
<!ENTITY % hostname.type      "NMTOKEN"        >
<!ENTITY % hostname.name      "hostname"        >
```

URL Type

The url type represents URL.

```
<!ENTITY % url.type           "CDATA"          >
<!ENTITY % url.name           "url"            >
```

Email Type

The email type can be used to represent an email address.

```
<!ENTITY % email.type          "CDATA"          >
<!ENTITY % email.name          "email"           >
```

Bytes Type

The bytes type can be used to represent quantity of data. (5m, 1.2g, 300bytes, etc.)

```
<!ENTITY % bytes.type          "CDATA"          >
<!ENTITY % bytes.name          "bytes"           >
```

Filename Type

The filename type can be used to Represent the name of a file or directory.

```
<!ENTITY % filename.type       "CDATA"          >
<!ENTITY % filename.name       "filename"        >
```

Field Type

Important: This type should be considered internal to Lire and shouldn't be used as a parameter or DLF field type.

The field type can contains a DLF field name. It is used in the parameter specification to represent a choice of sort field for example.

```
<!ENTITY % field.type          "NMTOKEN"        >
<!ENTITY % field.name          "field"           >
```

Superservice Type

Important: This type should be considered internal to Lire and shouldn't be used as a parameter or DLF field type.

```
<!ENTITY % superservice.type "NMTOKEN" >
<!ENTITY % superservice.name "superservice" >
```

Chart Type

Important: This type should be considered internal to Lire and shouldn't be used as a parameter or DLF field type.

```
<!ENTITY % chart.type "bars | lines | pie | histogram" >
<!ENTITY % chart.name "chart" >
```

Related Types

```
<!ENTITY % basic.types "%bool.name; | %int.name; |
                        %number.name; | %string.name;" >
<!ENTITY % internet.types "%email.name; | %url.name; |
                           %ip.name; | %hostname.name; |
                           %port.name;" >
<!ENTITY % misc.types "%filename.name; | %bytes.name; " >
<!ENTITY % time.types "%date.name; | %time.name; |
                       %timestamp.name; | %duration.name;" >

<!ENTITY % lire.types "%basic.types; | %time.types; |
                       %internet.types; | %misc.types;" >
```

Chapter 8. The Lire Report Configuration Specification Markup Language

The Lire Report Configuration Specification Markup Language

Document Type Definition for the Lire Report Configuration Specification Markup Language.

This DTD defines a grammar that is used to specify the configuration parameters used by the Lire framework. Besides the framework parameters, this DTD can be used by extensions writers to register their parameters with the framework. The configuration specifications are usually stored in *prefix/share/lire/config-spec*.

Currently, Lire's configuration namespace is flat, which means that two different specification documents cannot define parameters of the same names.

Elements of this DTD uses the <http://www.logreport.org/LRCSML/> namespace that is usually mapped to the `lrscml` prefix.

The latest version of that DTD is 1.0 and its public identifier is `-//LogReport.ORG//DTD Lire Report Specification Markup Language V1.0//EN`. Its canonical system identifier is <http://www.logreport.org/LRCSML/1.0/lrscml.dtd>.

```
<!--
-->

<!--          Namespace prefix for validation using the
              DTD
-->
<!ENTITY % LIRE.xmlns.pfx      "lrscml"
>
<!ENTITY % LIRE.pfx           "%LIRE.xmlns.pfx;"
>
<!ENTITY % LIRE.xmlns.attr.name "xmlns:%LIRE.xmlns.pfx;"
>
<!ENTITY % LIRE.xmlns.attr
"%LIRE.xmlns.attr.name; CDATA #FIXED 'http://www.logreport.org/LRCSML/' ">
```

This DTD uses the common `lire-desc.mod` module which is used to include a subset of DocBook in description and text elements.

```
<!ENTITY % lire-desc.mod PUBLIC
"-//LogReport.ORG//ELEMENTS Lire Description Elements V2.0//EN"
"lire-desc.mod">
%lire-desc.mod;
```

Each configuration specification is a XML document which has one `config-spec` as its root element.

```
<!ENTITY % LIRE.config-spec      "%LIRE.pfx;config-spec"          >
<!ENTITY % LIRE.summary          "%LIRE.pfx;summary"              >
<!ENTITY % LIRE.boolean          "%LIRE.pfx;boolean"              >
<!ENTITY % LIRE.integer          "%LIRE.pfx;integer"              >
<!ENTITY % LIRE.string           "%LIRE.pfx;string"               >
<!ENTITY % LIRE.service          "%LIRE.pfx;service"              >
<!ENTITY % LIRE.command          "%LIRE.pfx;command"              >
<!ENTITY % LIRE.file             "%LIRE.pfx;file"                 >
<!ENTITY % LIRE.executable       "%LIRE.pfx;executable"           >
<!ENTITY % LIRE.directory        "%LIRE.pfx;directory"            >
<!ENTITY % LIRE.select           "%LIRE.pfx;select"               >
<!ENTITY % LIRE.option           "%LIRE.pfx;option"               >
<!ENTITY % LIRE.list             "%LIRE.pfx;list"                 >

<!ENTITY % LIRE.summary          "%LIRE.pfx;summary"              >
<!ENTITY % types-spec            "%LIRE.boolean;|%LIRE.integer;|
                                %LIRE.string;|%LIRE.service;|
                                %LIRE.command;|%LIRE.file;|
                                %LIRE.executable;|%LIRE.directory;|
                                %LIRE.select;|%LIRE.list;"          >

<!ENTITY % common.mix            "(%LIRE.summary;)?,(%LIRE.description;)?">
```

config-spec element

Root element of a configuration specification document. It contains a list of parameter specifications..

This element doesn't have any attributes.

```
<!ELEMENT %LIRE.config-spec; ((%types-spec;)+)          >
<!ATTLIST %LIRE.config-spec;
        %LIRE.xmlns.attr;                                >
```

summary element

This element is used for a short one description of the parameter's purpose. Use the `description` element for longer help text.

This element doesn't have any attribute.

```
<!ELEMENT %LIRE.summary;      (#PCDATA)                >
```

Parameter Specifications Elements

Common Attributes

These attributes are common to all parameters specification elements:

name

Contains the name of the parameter to which this specification apply.

section

This attribute can be used to set a menu section which can be used by configuration frontends to group parameters together.

contexts

This attribute contains a white space delimited list of tokens which are hints to the user interface tools specifying in which contexts this option can be set. (The context currently used are `global` and `job`).

```
<!ENTITY % common.attr "  
    name      NMTOKEN          #REQUIRED  
    section   CDATA            #IMPLIED  
    contexts  NMTOKENS         #IMPLIED">
```

boolean element

This element is used to define a boolean parameter which can takes a `yes` or `no` value.

This element doesn't have any specific attributes.

```
<!ELEMENT %LIRE.boolean; (%common.mix;) >  
<!ATTLIST %LIRE.boolean;  
    %common.attr;  
>
```


integer element

This element is used to define an integer parameter.

This element doesn't have any specific attributes.

```
<!ELEMENT %LIRE.integer; (%common.mix;) >
<!ATTLIST %LIRE.integer;
    %common.attr;
    >
```

string element

This element is used to define a string parameter. These parameters can contains any value.

This element doesn't have any specific attributes.

```
<!ELEMENT %LIRE.string; (%common.mix;) >
<!ATTLIST %LIRE.string;
    %common.attr;
    >
```

service element

This element is used to define a service parameter. To be accepted as valid the parameter's value must point to a recognized Lire service.

This element doesn't have any specific attributes.

```
<!ELEMENT %LIRE.service; (%common.mix;) >
<!ATTLIST %LIRE.service;
    %common.attr;
    >
```

command element

This element is used to define a command parameter. To be accepted as valid the parameter's value must point to an executable file or an executable file with the specified value must exist in a directory of the PATH environment variable.

This element doesn't have any specific attributes.

```
<!ELEMENT %LIRE.command; (%common.mix;) >
<!ATTLIST %LIRE.command;
    %common.attr;
    >
```

file element

This element is used to define a file parameter. To be accepted as valid, the parameter's value must point to an existing file.

This element doesn't have any specific attributes.

```
<!ELEMENT %LIRE.file; (%common.mix;) >
<!ATTLIST %LIRE.file;
    %common.attr;
    >
```

directory element

This element is used to define a directory parameter. To be accepted as valid, the parameter's value must point to an existing directory.

This element doesn't have any specific attributes.

```
<!ELEMENT %LIRE.directory; (%common.mix;) >
<!ATTLIST %LIRE.directory;
    %common.attr;
    >
```

executable element

This element is used to define an executable parameter. To be accepted as valid, the parameter's value must point to an existing executable file.

This element doesn't have any specific attributes.

```
<!ELEMENT %LIRE.executable; (%common.mix;) >
<!ATTLIST %LIRE.executable;
    %common.attr;
    >
```

select element

This element is used to define a parameter for which the value is selected among a set of options. The allowed set of options is specified using `option` elements.

This element doesn't have any specific attributes.

```
<!ELEMENT %LIRE.select;      (%common.mix;,(%LIRE.option;)+)      >
<!ATTLIST %LIRE.select;
    %common.attr;
                                     >
```

option element

This element is used to define the valid values for a `select` parameter.

This element doesn't have any specific attributes.

```
<!ELEMENT %LIRE.option;      (%common.mix;)      >
<!ATTLIST %LIRE.option;
    %common.attr;
                                     >
```

list element

This element is used to define a parameter that can contains an ordered set of values. The type of values which can be contained is specified using other parameters elements. Any number of parameters of the type specified by the children elements can be contained by the defined parameter.

This element doesn't have any specific attributes.

```
<!ELEMENT %LIRE.list;        (%common.mix;,(%types-spec;)+)      >
<!ATTLIST %LIRE.list;
    %common.attr;
                                     >
```

Chapter 9. The Lire Report Configuration Markup Language

The Lire Report Configuration Markup Language

Document Type Definition for the Lire Report Configuration Markup Language.

This DTD defines a grammar that is used to store the Lire configuration. The configuration is stored in one or more XML files. Parameters set in later configuration files override the ones set in the formers. The valid parameter names as well as their description and type are specified using configuration specification documents.

Elements of this DTD use the `http://www.logreport.org/LRCML/` namespace, which is usually mapped to the `lrcml` prefix.

The latest version of the DTD is 1.0 and its public identifier is `--/LogReport.ORG//DTD Lire Report Specification Markup Language V1.0//EN`. Its canonical system identifier is `http://www.logreport.org/LRCML/1.0/lrcml.dtd`.

```
<!--
-->

<!--          Namespace prefix for validation using the
                DTD
-->
<!ENTITY % LIRE.xmlns.pfx      "lrcml"
>
<!ENTITY % xmlns.colon        ":"
>
<!ENTITY % LIRE.pfx           "%LIRE.xmlns.pfx;%xmlns.colon;"
>
<!ENTITY % LIRE.xmlns.attr.name "xmlns%xmlns.colon;%LIRE.xmlns.pfx;"
>
<!ENTITY % LIRE.xmlns.attr
    "%LIRE.xmlns.attr.name; CDATA #FIXED 'http://www.logreport.org/LRCML/' ">
```

Each configuration specification is an XML document which has one `config` as its root element.

```
<!ENTITY % LIRE.config          "%LIRE.pfx;config"
>
<!ENTITY % LIRE.global          "%LIRE.pfx;global"
>
<!ENTITY % LIRE.param           "%LIRE.pfx;param"
>
```

config element

Root element of a configuration document. It contains presently only one `global` element which is used to hold the global configuration parameters.

This element doesn't have any attributes.

```
<!ELEMENT %LIRE.config; (%LIRE.global;)>
<!ATTLIST %LIRE.config;
    %LIRE.xmlns.attr; >
```

global element

This element starts the global configuration data. (This is the only scope currently defined). It contains a list of `param` elements.

```
<!ELEMENT %LIRE.global; (%LIRE.param;)+>
```

param element

This element contains the parameter's value. The parameter's name is defined in the `name` attribute.

When the parameter's type is a list, the values are stored in children `param` elements.

Warning

This element has a mixed content type. We should probably use a `value` attribute to hold scalar values.

```
<!ELEMENT %LIRE.param; (#PCDATA|%LIRE.param;)*>
<!ATTLIST %LIRE.param;
    name          NMTOKEN          #REQUIRED >
```

Chapter 10. The Lire DLF Schema Markup Language

The Lire DLF Schema Markup Language

The Lire DLD Schema Markup Language (LDSML) is used describe the fields used by DLF records of a specific schema like *www*, *email* or *msgstore*.

DLF schemas are defined in one XML document that should be installed in one of the directories that is included in the schema path (usually *HOME/.lire/schemas* and *prefix/share/lire/schemas*). This document must conforms to the LDSML DTD which is described here. Elements of that DTD are defined in the namespace <http://www.logreport.org/LDSML/> which will be usually mapped to the *lire* prefix (although other prefixes may be used).

The latest version of that DTD is 1.1 and its public identifier is *-//LogReport.ORG//DTD Lire DLF Schema Markup Language V1.1//EN*. Its canonical system identifier is <http://www.logreport.org/LDSML/1.1/ldsml.dtd>.

```
<!--                Namespace prefix for validation using the
                        DTD                                -->
<!ENTITY % LIRE.xmlns.pfx      "lire"                    >
<!ENTITY % LIRE.pfx           "%LIRE.xmlns.pfx;"         >
<!ENTITY % LIRE.xmlns.attr.name "xmlns:%LIRE.xmlns.pfx;" >
<!ENTITY % LIRE.xmlns.attr
    "%LIRE.xmlns.attr.name; CDATA #FIXED
    'http://www.logreport.org/LDSML/' ">
```

This DTD uses the common modules *lire-types.mod* which defines the data types recognized by Lire and *lire-desc.mod* which is used to include a subset of DocBook in description and text elements.

```
<!ENTITY % lire-types.mod PUBLIC
    "-//LogReport.ORG//ENTITIES Lire Data Types V1.0//EN"
    "lire-types.mod">
%lire-types.mod;

<!ENTITY % lire-desc.mod PUBLIC
    "-//LogReport.ORG//ELEMENTS Lire Description Elements V2.0//EN"
    "lire-desc.mod">
%lire-desc.mod;
```

The top-level element in XML documents describing a DLF schema will be either a *dlf-schema*, *extented-schema* or *derived-schema* depending on the schema's type. *DLF schemas* are used as

base schema for one superservice. For example, the DLF schema of the `www` superservice is named `www`. An *extended schema* is used to define additional fields which values are to be computed by an *analyser*.

Extended schemas are named after the schema which they extend. For example, the `www-attack` extended schema adds an *attack* field which contains, if any, the “attack” that was attempted in that request.

Derived schemas are used by another type of analysers which defines an entirely different schema. Whereas in the extended schema the new fields will be added to all the DLF records of the base schema, the derived schema will create new DLF records based on the DLF records of the base schema. An example of this is the `www-session` schema which computes users’ session information based on the web requests contained in the `www` schema. Like for the `extended-schema` case, derived schemas are named after the base schema from which they are derived.

The fields that makes each schema are defined using *field* elements.

```
<!-- Prefixed names declaration. -->
<!ENTITY % LIRE.dlf-schema      "%LIRE.pfx;dlf-schema"      >
<!ENTITY % LIRE.extended-schema "%LIRE.pfx;extended-schema"  >
<!ENTITY % LIRE.derived-schema  "%LIRE.pfx;derived-schema"  >
<!ENTITY % LIRE.field           "%LIRE.pfx;field"           >
```

The `dlf-schema` element

The `dlf-schema` element is used to define the base schema of a superservice. It should contains optional `title` and `description` elements followed by `field` elements describing the schema structure.

The `title` is an optional text string that will be used to in the automatic documentation generation that can be extracted from the schema definition. The `description` element should describe what is represented by each DLF records (one web request, one email delivery, one firewall event, etc.)

`dlf-schema`’s attributes

`superservice`

This required attribute contains the name of the superservice described by this schema. This will also be used as the base schema’s identifier.

`timestamp`

This required attribute contains the name of the field which contains the official event’s timestamp. This field will be used to sort the DLF records for timegroup and timeslot report operations.

```
<!ELEMENT %LIRE.dlf-schema;  ( (%LIRE.title;)?, (%LIRE.description;)?,
                                (%LIRE.field;)+ )
                                >
<!ATTLIST %LIRE.dlf-schema;
```

```

superservice    %superservice.type;          #REQUIRED
timestamp       IDREF                        #REQUIRED
%LIRE.xmlns.attr;
>

```

extended-schema element

This is the root element of an extended DLF Schema. Extended-schema defines additional fields that will be added to the base schema. It contains an optional title, an optional description and one or more field specifications.

dlf-schema's attributes

id

This required attribute contains the identifier of that schema. This identifier should be composed of the superservice's name followed by an hyphen (-) and then an word describing the extended schema.

base-schema

This required attribute contains the identifier of the schema that is extended.

required-fields

This optional attribute contains a space delimited list of field names that must be available in the base schema for the analyser to do its job. If any of the listed field is missing in the DLF, extended fields for the base schema cannot be computed.

module

This required attribute contains the name of the analyser that is used to compute the extended fields. This is a perl module that should be installed in perl's library path.

```

<!ELEMENT %LIRE.extended-schema;
                ( (%LIRE.title;)?, (%LIRE.description;)?,
                  (%LIRE.field;)+ )
                >
<!ATTLIST %LIRE.extended-schema;
    id             NMTOKEN          #REQUIRED
    base-schema    NMTOKEN          #REQUIRED
    module         NMTOKEN          #REQUIRED
    required-fields NMTOKENS        #IMPLIED
    %LIRE.xmlns.attr;
>

```


derived-schema element

This is the root element of a derived DLF Schema. The difference between a normal schema and a derived schema is that the data is generated from another DLF instead of a log file.

derived-schema's attributes

id

This required attribute contains the identifier of that schema. This identifier should be composed of the superservice's name followed by an hyphen (-) and then an word describing the derived schema.

base-schema

This required attribute contains the identifier of the schema from which this derived schema's data is derived.

required-fields

This optional attribute contains a space delimited list of field names that must be available in the base schema for the analyser to do its job. If any of the listed field is missing in the DLF, the derived records cannot be computed.

module

This required attribute contains the name of the analyser that is used to compute the derived records. This is a perl module that should be installed in perl's library path.

timestamp

This required attribute contains the name of the field which contains the official event's timestamp. This field will be used to sort the DLF records for timegroup and timeslot report operations.

```
<!ELEMENT %LIRE.derived-schema;
          ( (%LIRE.title;)?, (%LIRE.description;)?,
            (%LIRE.field;)+ )
          >
<!ATTLIST %LIRE.derived-schema;
          id             NMTOKEN          #REQUIRED
          base-schema    NMTOKEN          #REQUIRED
          module         NMTOKEN          #REQUIRED
          required-fields NMTOKENS        #IMPLIED
          timestamp      IDREF            #REQUIRED
          %LIRE.xmlns.attr;
          >
```

field element

The `field` is used to describe the fields of the schema. Each field is specified by its name and type. The field element may contain an optional `description` element which gives more information on the data

contained in the field. Description should be used to give better information to the DLF converter implementors on what should appears in that field.

field's attributes

name

This required attribute contains the name of the field.

type

This required attribute contains the the field's type.

default

Warning

This attribute is obsolete and will be removed in a future Lire release.

label

This optional attribute gives the label that should be used to display this field in reports. Defaults to the field's name when omitted.

```
<!ELEMENT %LIRE.field;          (%LIRE.description;)?          >
<!ATTLIST %LIRE.field;
      name          ID          #REQUIRED
      type          (%lire.types;) #REQUIRED
      default       CDATA       #IMPLIED
      label         CDATA       #IMPLIED >
```

Chapter 11. The Lire Report Specification Markup Language

The Lire Report Specification Markup Language

Document Type Definition for the Lire Report Specification Markup Language.

This DTD defines a grammar that is used to specify reports that can be generated by Lire. Elements of this DTD uses the `http://www.logreport.org/LRSML/` namespace that is usually mapped to the `lire` prefix.

The latest version of that DTD is 2.0 and its public identifier is `-//LogReport.ORG//DTD Lire Report Specification Markup Language V2.0//EN`. Its canonical system identifier is `http://www.logreport.org/LRSML/2.0/lrsml.dtd`.

```
<!--
-->

<!--          Namespace prefix for validation using the
              DTD
-->
<!ENTITY % LIRE.xmlns.pfx      "lire"
>
<!ENTITY % LIRE.pfx           "%LIRE.xmlns.pfx;:"
>
<!ENTITY % LIRE.xmlns.attr.name "xmlns:%LIRE.xmlns.pfx;"
>
<!ENTITY % LIRE.xmlns.attr
      "%LIRE.xmlns.attr.name; CDATA #FIXED 'http://www.logreport.org/LRSML/' ">
```

This DTD uses the common modules `lire-types.mod` which defines the data types recognized by Lire and `lire-desc.mod` which is used to include a subset of DocBook in description and text elements.

```
<!ENTITY % lire-types.mod PUBLIC
      "-//LogReport.ORG//ENTITIES Lire Data Types V1.0//EN"
      "lire-types.mod">
%lire-types.mod;

<!ENTITY % lire-desc.mod PUBLIC
      "-//LogReport.ORG//ELEMENTS Lire Description Elements V2.0//EN"
      "lire-desc.mod">
%lire-desc.mod;
```

Each report specification is a XML document which has one `report-spec` as its root element. This DTD can also be used for filter specification which have one `global-filter-spec` as root element.

```

<!ENTITY % LIRE.report-spec      "%LIRE.pfx;report-spec"          >
<!ENTITY % LIRE.global-filter-spec "%LIRE.pfx;global-filter-spec">
<!ENTITY % LIRE.display-spec      "%LIRE.pfx;display-spec"        >
<!ENTITY % LIRE.param-spec        "%LIRE.pfx;param-spec"          >
<!ENTITY % LIRE.param             "%LIRE.pfx;param"               >
<!ENTITY % LIRE.filter-spec       "%LIRE.pfx;filter-spec"         >
<!ENTITY % LIRE.report-calc-spec  "%LIRE.pfx;report-calc-spec"    >

```

report-spec element

Root element of a report specification. It contains descriptive elements about the report specification (title, description). It contains the display elements that will be in the generated report (display-spec).

It contains specification for the parameters that can be used to customize the report generated from this specification (param-spec). Finally, it contains elements to specify a filter expression which can be used to select a subset of the records (filter-spec) and the expression to build the report (report-calc-spec).

report-spec's attributes

id

the name of the superservice for which this report is available : i.e. email, www, dns, etc.

schema

The DLF schema used by the report. This defaults to the superservice's schema, but can be one of its derived or extended schema.

id

An unique identifier for the report specification

```

<!ELEMENT %LIRE.report-spec;
    (%LIRE.title;, %LIRE.description;,
     (%LIRE.param-spec;)?, %LIRE.display-spec;,
     (%LIRE.filter-spec;)?,
     %LIRE.report-calc-spec;)
>

<!ATTLIST %LIRE.report-spec;
    id                ID                #REQUIRED
    superservice      %superservice.type; #REQUIRED
    schema            NMTOKEN           #IMPLIED
    charttype         (%chart.type; )   #IMPLIED
    %LIRE.xmlns.attr;
>

```

global-filter-spec element

Root element of a filter specification. It contains descriptive elements about the filter specification (`title`, `description`). It contains the display elements that will be used when that filter is used in a generated report (`display-spec`). It contains specification for the parameters that can be used to customize the filter generated from this specification (`param-spec`). Finally, it contains element to specify the filter expression which can be used to select a subset of the records (`filter-spec`).

global-filter-spec's attributes

`superservice`

the name of the superservice for which this filter is available : i.e. email, www, dns, etc.

`schema`

the DLF schema used by the report. This defaults to the superservice's schema, but can be one of its derived or extended schema.

`id`

An unique identifier for the filter specification

```
<!ELEMENT %LIRE.global-filter-spec;
    (%LIRE.title;, %LIRE.description;,
    (%LIRE.param-spec;)?, %LIRE.display-spec;,
    (%LIRE.filter-spec;))
    >

<!ATTLIST %LIRE.global-filter-spec;
    id                ID                #REQUIRED
    superservice      %superservice.type; #REQUIRED
    schema            NMTOKEN           #IMPLIED
    %LIRE.xmlns.attr;
    >
```

display-spec element

This element contains the descriptive element that will appear in the generated report.

It contains one title and may contains one description which will be used as help message

This element has no attribute.

```
<!ELEMENT %LIRE.display-spec; (%LIRE.title;, (%LIRE.description;)?) >
```

param-spec element

This element contains the parameters than can be customized in this report specification.

This element doesn't have any attribute.

```
<!ELEMENT %LIRE.param-spec; (%LIRE.param;)+>
```

param element

This element contains the specification for a parameter than can be used to customize this report.

This element can contains a `description` element which can be used to explain the parameter's purpose.

It is an error to define a parameter with the same name than one of the superservice's field.

param's attributes

name

the name of the parameter.

type

the parameter's data type

default

the parameter's default value

```
<!ELEMENT %LIRE.param; (%LIRE.description;)?>
<!ATTLIST %LIRE.param;
    name          ID          #REQUIRED
    type          (%lire.types;)> #REQUIRED
    default       CDATA       #IMPLIED >
```

Filter expression elements

```
<!ENTITY % LIRE.eq      "%LIRE.pfx:eq">
<!ENTITY % LIRE.ne      "%LIRE.pfx:ne">
<!ENTITY % LIRE.gt      "%LIRE.pfx:gt">
<!ENTITY % LIRE.ge      "%LIRE.pfx:ge">
<!ENTITY % LIRE.lt      "%LIRE.pfx:lt">
<!ENTITY % LIRE.le      "%LIRE.pfx:le">
```

```

<!ENTITY % LIRE.and      "%LIRE.pfx;and"          >
<!ENTITY % LIRE.or       "%LIRE.pfx;or"           >
<!ENTITY % LIRE.not      "%LIRE.pfx;not"          >
<!ENTITY % LIRE.match    "%LIRE.pfx;match"        >
<!ENTITY % LIRE.value    "%LIRE.pfx;value"        >

<!ENTITY % expr "%LIRE.eq; | %LIRE.ne; |
               %LIRE.gt; | %LIRE.lt; | %LIRE.ge; | %LIRE.le; |
               %LIRE.and; | %LIRE.or; | %LIRE.not; |
               %LIRE.match; | %LIRE.value;"      >

```

filter-spec element

This element is used to select the subset of the records that will be used to generate the report. If this element is missing, all records will be used to generate the report.

The content of this element are expression element which defines an expression which will evaluate to true or false for each record. The subset used for to generate the report are all records for which the expression evaluates to true.

The value used to evaluate the expressions are either literal, value of parameter or value of one of the field of the record. Parameter and field starts with a \$ followed by the name of the parameter or field. All other values are interpreted as literals.

This element doesn't have any attribute.

```

<!ELEMENT %LIRE.filter-spec; (%expr;)            >

```

value element

This expression element to false if the 'value' attribute is undefined, the empty string or 0. It evaluate to true otherwise.

value's attributes

value

The value that should be evaluated for a boolean context.

```

<!ELEMENT %LIRE.value;   EMPTY                      >
<!ATTLIST %LIRE.value;
      value              CDATA                      #REQUIRED >

```

eq element

```
<!ELEMENT %LIRE.eq;          EMPTY                      >
<!ATTLIST %LIRE.eq;
      arg1      CDATA      #REQUIRED
      arg2      CDATA      #REQUIRED >
```

ne element

```
<!ELEMENT %LIRE.ne;          EMPTY                      >
<!ATTLIST %LIRE.ne;
      arg1      CDATA      #REQUIRED
      arg2      CDATA      #REQUIRED >
```

gt element

```
<!ELEMENT %LIRE.gt;          EMPTY                      >
<!ATTLIST %LIRE.gt;
      arg1      CDATA      #REQUIRED
      arg2      CDATA      #REQUIRED >
```

ge element

```
<!ELEMENT %LIRE.ge;          EMPTY                      >
<!ATTLIST %LIRE.ge;
      arg1      CDATA      #REQUIRED
      arg2      CDATA      #REQUIRED >
```

lt element

```
<!ELEMENT %LIRE.lt;          EMPTY                      >
<!ATTLIST %LIRE.lt;
      arg1      CDATA      #REQUIRED
```



```
arg2          CDATA          #REQUIRED >
```

le element

```
<!ELEMENT %LIRE.le;          EMPTY          >
<!ATTLIST %LIRE.le;
    arg1          CDATA          #REQUIRED
    arg2          CDATA          #REQUIRED >
```

match element

The match expression element tries to match a POSIX 1003.2 extended regular expression to a value and return true if there is a match and false otherwise.

match's attributes

value

the value which should matched

re

A POSIX 1003.2 extended regular expression.

case-sensitive

Is the regex sensitive to case. Defaults to true.

```
<!ELEMENT %LIRE.match;      EMPTY          >
<!ATTLIST %LIRE.match;
    value          CDATA          #REQUIRED
    re             CDATA          #REQUIRED
    case-sensitive (%bool.type;)   'true'   >
```

not element

```
<!ELEMENT %LIRE.not;      (%expr;)          >
```

and element

```
<!ELEMENT %LIRE.and;      (%expr;)+      >
```

or element

```
<!ELEMENT %LIRE.or;       (%expr;)+      >
```

Report Calculation Elements

```
<!ENTITY % LIRE.timegroup  "%LIRE.pfx;timegroup"      >
<!ENTITY % LIRE.group      "%LIRE.pfx;group"          >
<!ENTITY % LIRE.rangegroup "%LIRE.pfx;rangegroup"      >
<!ENTITY % LIRE.timeslot   "%LIRE.pfx;timeslot"        >
<!ENTITY % LIRE.field      "%LIRE.pfx;field"           >
<!ENTITY % LIRE.sum        "%LIRE.pfx;sum"             >
<!ENTITY % LIRE.avg        "%LIRE.pfx;avg"             >
<!ENTITY % LIRE.min        "%LIRE.pfx;min"             >
<!ENTITY % LIRE.max        "%LIRE.pfx;max"             >
<!ENTITY % LIRE.first      "%LIRE.pfx;first"           >
<!ENTITY % LIRE.last       "%LIRE.pfx;last"            >
<!ENTITY % LIRE.count      "%LIRE.pfx;count"           >
<!ENTITY % LIRE.records    "%LIRE.pfx;records"         >

<!-- Empty group operator                                -->
<!ENTITY % LIRE.empty-ops  "%LIRE.sum; | %LIRE.avg; | %LIRE.count; |
                           %LIRE.min; | %LIRE.max; | %LIRE.first; |
                           %LIRE.last; | %LIRE.records;"  >

<!-- Group operations that are also aggregators          -->
<!ENTITY % LIRE.nestable-aggr
                           "%LIRE.group; | %LIRE.timegroup; |
                           %LIRE.timeslot; | %LIRE.rangegroup;"  >

<!-- Group operations                                    -->
<!ENTITY % LIRE.group-ops  "%LIRE.empty-ops; | %LIRE.nestable-aggr;" >

<!-- Containers for group operations                    -->
<!ENTITY % LIRE.aggregator "%LIRE.nestable-aggr;"      >
```

report-calc-spec element

This element describes the computation needs to generate the report.

It contains one aggregator element.

This element doesn't have any attributes.

```
<!ELEMENT %LIRE.report-calc-spec; (%LIRE.aggregator;) >
```

Common Attributes

All elements which will create a column in the resulting report have a label attribute that will be used as the column label. When this attribute is omitted, the name attribute content will be used as column label.

```
<!ENTITY % label.attr "label CDATA #IMPLIED">
```

All operation elements may have a name attribute which can be used to reference that column. (It is required in the case of aggregate functions). The primary usage is for controlling the sort order of the rows in the generated report.

```
<!ENTITY % name.attr "name ID #IMPLIED">
<!ENTITY % name.attr.req "name ID #REQUIRED">
```

group element

The group element generates a report where records are grouped by some field values and aggregate statistics are computed on those group of records.

It contains the field that should be used for grouping and the statistics that should be computed.

The sort order in the report is controlled by the 'sort' attribute.

group's attributes

name

An identifier that can be used to reference this operation from other elements. This name will most often be used in the parent's sort attribute. If omitted a default name will be generated.

sort

whitespace delimited list of fields name that should used to sort the records. Field names can be prefixed by - to specify reverse sort order, otherwise ascending sort order is used. The name can also refer to the name attribute of the statistics element.

limit

limit the number of records that will be in the generated report. It can be either a positive integer or the name of a user supplied param.

```
<!ELEMENT %LIRE.group;          ((%LIRE.field;)+, (%LIRE.group-ops;)+)    >
<!ATTLIST %LIRE.group;
    %name.attr;
            sort          NMTOKENS          #IMPLIED
            limit         CDATA              #IMPLIED >
```

timegroup element

The timegroup element generates a report where records are grouped by time range (hour, day, etc.). Statistics are then computed on these records grouped by period.

timegroup's attributes**name**

An identifier that can be used to reference this operation from other elements. This name will most often be used in the parent's sort attribute. If omitted a default name will be generated.

label

Sets the column label that will be used for column generated by this element. If omitted a default label will be generated.

field

the name of the field which is used to group records. This should be a field which is of one of the time types (timestamp, date, time). It defaults to the default timestamp field if unspecified.

period

This is the timeperiod over which records should be grouped. Valid period looks like (hour, day, 1h, 30m, etc). It can also be the name of a user supplied param.

```
<!ELEMENT %LIRE.timegroup;      (%LIRE.group-ops;)+                      >
<!ATTLIST %LIRE.timegroup;
    %name.attr;
    %label.attr;
            field          NMTOKEN          #IMPLIED
```

period CDATA #REQUIRED >

timeslot element

The `timeslot` element generates a report where records are grouped according to a cyclic unit of time. The duration unit used won't fall over to the next higher unit. For example, this means that using a unit of 1d will generate a report where the stats will be by day of the week, 8h will generate a report by third of day, etc. The statistics are then computed over the records in the same timeslot.

Example 11-1. timeslot with 1d unit

Using a specification like:

```
<lire:timeslot unit="1d">
  ...
</lire:timeslot>
```

would generate a report like:

Table 11-1. weekly overview

Sunday	...
Monday	...
Tuesday	...
...	...
Saturday	...

where data will be summed over all Sunday's, Monday's, ..., and Saturdays found in the log.

Example 11-2. timeslot with 2m unit

Specifying `unit="2m"` would generate a line for each two months, giving a yearly view.

timeslot's attributes

name

An identifier that can be used to reference this operation from other elements. This name will most often be used in the parent's sort attribute. If omitted a default name will be generated.

label

Sets the column label that will be used for column generated by this element. If omitted a default label will be generated.

field

the name of the field which is used to group records. This should be a field which is of one of the time types (timestamp, date, time). It defaults to the default 'timestamp' field if unspecified.

unit

This is the cyclic unit of time in which units the records are aggregated. It can be any duration value. (hour, day, 1h, 30m, etc). It can also be the name of a user supplied param.

```
<!ELEMENT %LIRE.timeslot; (%LIRE.group-ops;)+>
<!ATTLIST %LIRE.timeslot;
    %name.attr;
    %label.attr;
            field      NMTOKEN      #IMPLIED
            unit       CDATA        #REQUIRED >
```

rangroup element

The `rangegroup` element generates a report where records are grouped into distinct class delimited by a range. This element can be used to aggregates continuous numeric values like duration or bytes. Statistics are then computed on these records grouped in range class.

rangegroup's attributes**name**

An identifier that can be used to reference this operation from other elements. This name will most often be used in the parent's sort attribute. If omitted a default name will be generated.

label

Sets the column label that will be used for column generated by this element. If omitted a default label will be generated.

field

the name of the field which is used to group records. This should be a field which is of a continuous numeric type (bytes, duration, int, number). Time types aggregation should use the `timegroup` element or `timeslot`.

range-start

The starting index of the first class. Defaults to 0. This won't be used a the lower limit of the class. It is only used to specify relatively at which values the classes delimitation start. For example, if the

range-start is 1, and the range-size is 5, a class ranging -4 to 0 will be created if values are in that range. It can be supplied in any continuous unit (i.e 10k, 5m, etc.) This can also be the name of a user supplied param.

range-size

This is the size of class. It can be supplied in any continuous unit (i.e 10k, 5m, etc.) It can also be the name of a user supplied param.

min-value

All value lower then this boundary value will be considered to be equal to this value. If this parameter isn't set, the ranges won't be bounded on the left side.

max-value

All value greater then this boundary value will be considered to be equal to this value. If this parameter isn't set, the ranges won't be bounded on the right side.

size-scale

The rate at which the size scale from one class to another. If it is different than 1, this will create a logarithmic distribution. For example, setting this to 2, each successive class will be twice larger than the precedent : 0-9, 10-29, 30-69, etc.

```
<!ELEMENT %LIRE.rangegroup;    (%LIRE.group-ops;)+
<!ATTLIST %LIRE.rangegroup;
    %name.attr;
    %label.attr;
        field                NMTOKEN                #REQUIRED
        range-start          CDATA                   #IMPLIED
        range-size           CDATA                   #REQUIRED
        min-value            CDATA                   #IMPLIED
        max-value            CDATA                   #IMPLIED
        size-scale           CDATA                   #IMPLIED
```

field element

This element reference a DLF field which value will be displayed in a separate column in the resulting report. Its used to specify the grouping fields in the `group` element and to specify the fields to output in the `records` element.

field's attribute

name

The name of the DLF field that will be used as key for grouping.

label

Sets the column label that will be used for column generated by this element. If omitted a default label will be generated.

```
<!ELEMENT %LIRE.field;    EMPTY                                >
<!ATTLIST %LIRE.field;
      name      NMTOKEN      #REQUIRED
      %label.attr;                                >
```

sum element

The `sum` element sums the value of a field in the group.

sum's attributes**name**

An identifier that can be used to reference this operation from other elements. This name will most often be used in the parent's sort attribute.

label

Sets the column label that will be used for column generated by this element. If omitted a default label will be generated.

field

the field that should be summed.

ratio

This attribute can be used to display the sum as a ratio of the group or table total. If the attribute is set to `group` the resulting value will be the ratio on the group's total sum. If the attribute is set to `table`, it will be expressed as a ratio of the total sum of the table. The default is `none` which will not convert the sum to a ratio.

weight

This optional attribute can be used to create a weighted sum. It should contain a numerical DLF field name. The content of that field will be used to multiply each field value before summing them.

```
<!ELEMENT %LIRE.sum;    EMPTY                                >
<!ATTLIST %LIRE.sum;
      %name.attr.req;
      %label.attr;
      ratio (none | group | table)          'none'
      field      NMTOKEN                    #REQUIRED
      weight NMTOKEN      #IMPLIED >
```


avg element

The avg element calculate average of all value of a field in the group. The average will be computed either on the number of records if the by-field attribute is left empty, or by the number of different values that there are in the by-fields.

avg's attributes**name**

An identifier that can be used to reference this operation from other elements. This name will most often be used in the parent's sort attribute.

label

Sets the column label that will be used for column generated by this element. If omitted a default label will be generated.

field

the field that should be averaged. If left unspecified the number of record will be counted.

by-fields

the fields that will be used to dermine the count over which the average is computed.

weight

This optional attribute can be used to create a weighted average. It should contain a numerical DLF field name. The content of that field will be used to multiply each field value before summing them. Its that weighted sum that will be used to calculate the average.

```
<!ELEMENT %LIRE.avg;      EMPTY                                >
<!ATTLIST %LIRE.avg;
    %name.attr.req;
    %label.attr;
        field      NMTOKEN      #IMPLIED
        by-fields  NMTOKENS     #IMPLIED
    weight NMTOKEN      #IMPLIED >
```

max element

The max element calculates the maximum value for a field in all the group's records.

max's attributes**name**

An identifier that can be used to reference this operation from other elements. This name will most often be used in the parent's sort attribute.

label

Sets the column label that will be used for column generated by this element. If omitted a default label will be generated.

field

the field for which the maximum value should found.

```
<!ELEMENT %LIRE.max;      EMPTY                                >
<!--ATTLIST %LIRE.max;
      %name.attr.req;
      %label.attr;
      field      NMTOKEN      #REQUIRED >
```

min element

The min element calculates the minimum value for a field in all the group's records.

min's attributes**name**

An identifier that can be used to reference this operation from other elements. This name will most often be used in the parent's sort attribute.

label

Sets the column label that will be used for column generated by this element. If omitted a default label will be generated.

field

the field for which the minimum value should found.

```
<!ELEMENT %LIRE.min;      EMPTY                                >
<!--ATTLIST %LIRE.min;
      %name.attr.req;
      %label.attr;
      field      NMTOKEN      #REQUIRED >
```

first element

The `first` element will display the value of the value of one field of the first DLF record within its group. The sort order is controlled through the sort attribute..

first's attributes

name

An identifier that can be used to reference this operation from other elements. This name will most often be used in the parent's sort attribute.

label

Sets the column label that will be used for column generated by this element. If omitted a default label will be generated.

field

the DLF field which will be displayed.

sort

whitespace delimited list of fields name that should used to sort the records. Field names can be prefixed by - to specify reverse sort order, otherwise ascending sort order is used. If this attribute is omitted, the records will be sort in ascending order of the default timestamp field.

```
<!ELEMENT %LIRE.first;      EMPTY                                     >
<!ATTLIST %LIRE.first;
      %name.attr.req;
      %label.attr;
      field      NMTOKEN      #REQUIRED
      sort      NMTOKENS     #IMPLIED
>
```

last element

The `last` element will display the value of the value of one field of the last DLF record within its group. The sort order is controlled through the sort attribute..

last's attributes

name

An identifier that can be used to reference this operation from other elements. This name will most often be used in the parent's sort attribute.

label

Sets the column label that will be used for column generated by this element. If omitted a default label will be generated.

field

the DLF field which will be displayed.

sort

whitespace delimited list of fields name that should used to sort the records. Field names can be prefixed by - to specify reverse sort order, otherwise ascending sort order is used. If this attribute is omitted, the records will be sort in ascending order of the default timestamp field.

```
<!ELEMENT %LIRE.last;      EMPTY                                >
<!ATTLIST %LIRE.last;
      %name.attr.req;
      %label.attr;
      field      NMTOKEN      #REQUIRED
      sort      NMTOKENS     #IMPLIED
>
```

count element

The `count` element counts the number of records in the group if the `fields` attribute is left empty. Otherwise, it will count the number of different values in the fields specified.

count's attributes**name**

An identifier that can be used to reference this operation from other elements. This name will most often be used in the parent's `sort` attribute.

label

Sets the column label that will be used for column generated by this element. If omitted a default label will be generated.

fields

Which fields to count. If unspecified all records in the group are counted. If not, only different fields' value will be counted.

ratio

This attribute can be used to display the frequency as a ratio of the group or table total. If the attribute is set to `group` the resulting value will be the ratio on the group's total frequency. If the

attribute is set to `table`, it will be expressed as a ratio of the total frequency of the table. The defaults is `none` which will not convert the frequency to a ratio.

```
<!ELEMENT %LIRE.count;  EMPTY                                     >
<!ATTLIST %LIRE.count;
    %name.attr.req;
    %label.attr;
    ratio (none | group | table)          'none'
    fields      NMTOKENS                  #IMPLIED >
```

records element

The `records` element will put the content of selected fields in the report. This can be used in reports that shows events matching certain criteria. The fields that will be included in the report for each record is specified by the `field` element.

records's attribute

`fields`

whitespace delimited list of fields name that should included in the report.

```
<!ELEMENT %LIRE.records;  EMPTY                                     >
<!ATTLIST %LIRE.records;
    fields      NMTOKENS                  #REQUIRED >
```

Chapter 12. The Lire Report Markup Language

The Report Markup Language

Document Type Definition for the XML Lire Report Markup Language as generated by `lr_dlf2xml`.

Elements of that DTD are defined in the namespace `http://www.logreport.org/LRML/` which will be usually mapped to the lire prefix.

The latest version of that DTD is 2.1 and its public identifier is `-//LogReport.ORG//DTD Report Markup Language V2.1//EN`. Its canonical system identifier is `http://www.logreport.org/LRML/2.1/lrml.dtd` (`http://www.logreport.org/LDSML/2.1/lrml.dtd`).

```
<!--                Namespace prefix for validation using the
                        DTD                                -->
<!ENTITY % LIRE.xmlns.pfx    "lire"                    >
<!ENTITY % LIRE.pfx          "%LIRE.xmlns.pfx;"         >
<!ENTITY % LIRE.xmlns.attr.name "xmlns:%LIRE.xmlns.pfx;" >
<!ENTITY % LIRE.xmlns.attr
    "%LIRE.xmlns.attr.name; CDATA #FIXED 'http://www.logreport.org/LRML/' ">
```

This DTD uses the common modules `lire-types.mod` which defines the data types recognized by Lire and `lire-desc.mod` which is used to include a subset of DocBook in description and text elements.

```
<!-- Include needed modules -->
<!ENTITY % lire-types.mod PUBLIC
    "-//LogReport.ORG//ENTITIES Lire Data Types V1.0//EN"
    "lire-types.mod">
%lire-types.mod;

<!ENTITY % lire-desc.mod PUBLIC
    "-//LogReport.ORG//ELEMENTS Lire Description Elements V2.0//EN"
    "lire-desc.mod">
%lire-desc.mod;
```

Each report is an XML document of which the top-level element is the `report` element. The report's data is contained in `subreport` elements (these hold the results of each report specification that was used to generate the report).

```
<!--                Parameter entities which defines qualified
                        names of the elements                -->
<!ENTITY % LIRE.report       "%LIRE.pfx;report"         >
<!ENTITY % LIRE.section      "%LIRE.pfx;section"        >
<!ENTITY % LIRE.subreport    "%LIRE.pfx;subreport"      >
```

```

<!ENTITY % LIRE.missing-subreport "%LIRE.pfx;missing-subreport"      >
<!ENTITY % LIRE.table             "%LIRE.pfx;table"                  >
<!ENTITY % LIRE.table-info        "%LIRE.pfx;table-info"            >
<!ENTITY % LIRE.group-info        "%LIRE.pfx;group-info"            >
<!ENTITY % LIRE.column-info       "%LIRE.pfx;column-info"           >
<!ENTITY % LIRE.group-summary     "%LIRE.pfx;group-summary"         >
<!ENTITY % LIRE.entry             "%LIRE.pfx;entry"                 >
<!ENTITY % LIRE.group             "%LIRE.pfx;group"                 >
<!ENTITY % LIRE.name              "%LIRE.pfx;name"                 >
<!ENTITY % LIRE.value             "%LIRE.pfx;value"                 >
<!ENTITY % LIRE.image             "%LIRE.pfx;image"                 >
<!ENTITY % LIRE.file              "%LIRE.pfx;file"                 >
<!ENTITY % LIRE.date              "%LIRE.pfx;date"                 >
<!ENTITY % LIRE.timespan          "%LIRE.pfx;timespan"              >
<!ENTITY % LIRE.hostname          "%LIRE.pfx;hostname"              >
<!ENTITY % LIRE.notes             "%LIRE.pfx;notes"                 >
<!ENTITY % LIRE.note              "%LIRE.pfx;note"                 >

<!-- ===== Parameter entities ===== -->

<!--                               Meta-information content mix      -->
<!ENTITY % meta-infos.mix
        "%LIRE.title;?, %LIRE.date;?, %LIRE.timespan;?,
        %LIRE.hostname;?, %LIRE.description;?,
        %LIRE.notes;?"
        >

```

report element

A report starts with the report's meta-informations: title, timespan, hostname and description.

The report's actual data is contained in one or more subreports.

report's attributes

version

The version of the DTD to which this report complies. New report should use the 2.1 value.

superservice

If set contains the superservice used by all subreports.

```

<!ELEMENT %LIRE.report;          (%meta-infos.mix;, (%LIRE.section;)+)  >
<!ATTLIST %LIRE.report;
        version             %number.type;          #REQUIRED
        superservice        %superservice.type;     #IMPLIED
        %LIRE.xmlns.attr;

```

The content of this element should be the timestamp in a format suitable for display.

The date in epoch time.

50

hostname element

The `hostname` element contains the hostname for which the report or subreport was generated. It doesn't have any attributes.

```
<!ELEMENT %LIRE.hostname;      (#PCDATA)                >
```

Annotations Elements

Lire reports can be annotated through the use of `note` element that can be included in a `notes` container.

notes element

The `notes` element can be used to add notes to a report. It contains one or more `note` element. It doesn't have any attributes.

```
<!ELEMENT %LIRE.notes;      (%LIRE.note;)+                >
```

note element

The `note` element contains various annotation material. It contains one or more of the DocBook elements we allow as block element.

note attribute

`xref`

This attribute can be used to attach the note to a particular data item of the report.

```
<!ELEMENT %LIRE.note;      (%docbook-block.mix;)+        >
<!ATTLIST %LIRE.note;
      xref      IDREF #IMPLIED                             >
```

section element

The `section` element group common subreports together. The section's description will usually contains informations about the filters that were applied in this section.

It contains a title, a description if some global filters were applied and the section's subreports.

This element doesn't have any attribute.

```
<!ELEMENT %LIRE.section;          (%LIRE.title;, (%LIRE.description;)?,
    (%LIRE.notes;)?, (%LIRE.subreport;|%LIRE.missing-subreport;)* ) >
```

subreport element

The `subreport` element contains data for a certain report.

It can contains meta-information elements, if they are different from the one of the report.

Example of subreports for the email superservice are :

- Message delay by relay in seconds.
- Per hour traffic summary.
- Top 10 messages delivery.
- etc.

The data is contains in a `table` element.

If a chart was generated for the table's data, its information is contained in an `image` element.

subreport's attributes

`id`

A unique identifier that can be used to link to this element.

`superservice`

the name of the superservice from which the report's data comes from : i.e. email, www, dns, etc.

`type`

This is the name of the report specification that was used to generated this subreport.

flags

A space delimited list of flags. The only currently defined flags is 'merged' to signal that the this subreport comes from merged data.

```
<!ELEMENT %LIRE.subreport;      (%meta-infos.mix;, %LIRE.table;,
    (%LIRE.image;)?)>
<!ATTLIST %LIRE.subreport;
    id      ID      #IMPLIED
           superservice %superservice.type;      #REQUIRED
           type      CDATA      #REQUIRED
           flags      NMTOKENS      #IMPLIED >
```

missing-subreport element**missing-subreport's attributes****id**

A unique identifier that can be used to link to this element.

superservice

the name of the superservice from which the report's data comes from : i.e. email, www, dns, etc.

type

This is the name of the report specification that was used to generated this subreport.

reason

The reason why this subreport is missing.

```
<!ELEMENT %LIRE.missing-subreport; (EMPTY) >
<!ATTLIST %LIRE.missing-subreport;
    id      ID      #IMPLIED
           superservice %superservice.type;      #REQUIRED
           reason      CDATA      #IMPLIED
           type      CDATA      #REQUIRED >
```

table element

The `table` element contains the data of the subreport. It starts by a `table-info` element which contains information on the columns defined in the subreport. Following the table structure, there is a `group-summary` element which contains values computed over all the records.

A `table` element can contains the subreport data directly or the data can be subdivided into groups.

An example of a subreport which would contains directly the data would be "messages per to-domain, top-10". This would contains ten entries, one for each to-domain.

An example of a subreport which would contains data in group would be "deliveries to users, per to-domain, top 30, top 5 users". It would contain 30 groups (one per to-domain) and each group would contain 5 entries (one per user).

Group can be nested to arbitrary depth (but logic don't recommend to nest too much).

table's attributes

`charttype`

being the type of chart which can be generated from the data is this table.

`show`

the number of entry to display. By default all entries should be displayed.

```
<!ELEMENT %LIRE.table;          (%LIRE.table-info; , %LIRE.group-summary; ,
    (%LIRE.entry;)* ) >
<!ATTLIST %LIRE.table;
    charttype      (%chart.type;)          #IMPLIED
    show           %int.type;              #IMPLIED >
```

table-info element

The `table-info` element contains information on the table structure. It contains one `column-info` element for each columns defined. It will also contains one `group-info` element for every grouping operation used in the report specification.

This element doesn't have any attribute.

```
<!ELEMENT %LIRE.table-info;      (%LIRE.column-info; | %LIRE.group-info;)+ >
```

group-info element

The `group-info` element play a similar role to the `table-info` element. Its used to group the columns defined by particular subgroup.

group-info's attribute

`name`

This attribute holds the name of the operation in the report specification which was responsible for the creation of this group data.

`row-idx`

Specify the row index of the table header in which this group's categorical labels should be displayed.

```
<!ELEMENT %LIRE.group-info;      (%LIRE.column-info;|%LIRE.group-info;)+ >
<!ATTLIST %LIRE.group-info;
    name      NMTOKEN              #REQUIRED
    row-idx   %int.type;           #REQUIRED >
```

column-info element

The `column-info` element describes a column of the table. It holds information related to display purpose (label, class, col-start, col-end, col-width) as well as information needed to use the content of the column as input to other computation (type, name).

The col-start, col-end and col-width can be used to render the data in grid.

column-info's attributes

`name`

This attribute contains the name of the operation in the report specification which was used to generata data in this column.

`type`

The Lire data type of this column.

`class`

This attribute can either be `categorical` or `numerical`. Categorical data is held in `name` element and numerical data is held in `value` element. Also, numerical column will have `column-summary` element associated to them.

label

This optional attribute contains the column's label. If omitted, the name attribute's content will be used.

col-start

The column number in which this column start. The first column being column 0.

col-end

The column number in which this column ends. The first column being column 0. Spans are used to cover "padding columns" to indent grouped entries under their parent entry.

col-width

The suggested column width (in characters) to use for this column.

max-chars

The maximum entry's length in that column (this includes the label).

avg-chars

The average entry's length in that column (this includes the label). This value is rounded up to the nearest integer.

```
<!ELEMENT %LIRE.column-info;          EMPTY          >
<!ATTLIST %LIRE.column-info;
    name      NMTOKEN #REQUIRED
    class     (categorical|numerical) #REQUIRED
    type      (%lire.types;) #REQUIRED
    label     CDATA          #IMPLIED
    col-start  %int.type;     #REQUIRED
    col-end    %int.type;     #REQUIRED
    col-width  %int.type;     #IMPLIED
    max-chars  %int.type;     #IMPLIED
    avg-chars  %int.type;     #IMPLIED >
```

group-summary element

The `group-summary` contains one value element for all the columns that contains numerical data. These elements will contains the statistics computed over all the DLF records which were processed by the group or the subreport.

group-summary's attribute**nrecords**

The number of DLF records that were processed by this group or subreport.

missing-cases

This attribute contains the number of `LIRE_NOTAVAIL` values found when computing the statistic. This number represents the number of records which didn't have the required information to group the records appropriately. If omitted or equals to 0, it means that all records had all the required information.

row-idx

Specify the row index in the table at which the group's summary value should be displayed. If this attribute is omitted, the summary values won't be displayed.

```
<!ELEMENT %LIRE.group-summary; (%LIRE.value;)*
<!ATTLIST %LIRE.group-summary;
    nrecords      %int.type;      #REQUIRED
    missing-cases %int.type;      #IMPLIED
    row-idx       %int.type;      #IMPLIED >
```

group element

The group element can be used to subdivide logically a report. It's used for aggregate reports like message per user per domain.

It contains a `group-summary` element which contains the group's values for the whole group followed by the entries that makes the group.

Groups can be nested more than once, but too much nesting augments information clutter and isn't useful for the user.

group's attributes**id**

A unique identifier that can be used to link to this element.

show

the number of entry to display. By default all entries should be displayed.

```
<!ELEMENT %LIRE.group; (%LIRE.group-summary;, (%LIRE.entry;)*>
<!ATTLIST %LIRE.group;
    id      ID      #IMPLIED
    show    %int.type;      #IMPLIED >
```


value

When the displayed format is different from the DLF representation, this attribute contains the DLF representation.

range

In some cases (like in report generated by the `timegroup`, `timeslot` or `range` specification), this attribute will contains the range's length from the starting value which is in the 'value' attribute.

```
<!ELEMENT %LIRE.name;          (#PCDATA)          >
<!ATTLIST %LIRE.name;
    id          ID          #IMPLIED
    col          NMTOKEN    #REQUIRED
    value        CDATA      #IMPLIED
    range        %number.type; #IMPLIED >
```

value element

The value element contains numerical column value..

value's attributes**id**

A unique identifier that can be used to link to this element.

col

The column's name. It should be the same than the one in the corresponding `column-info` element.

value

contains the value in numeric format. This is used when the value was scaled (1k, 5M, etc.)

total

for average value, this contains the total used to compute the average.

n

for average value, this contains the n value that was used to compute the average.

missing-cases

This attribute contains the number of `LIRE_NOTAVAIL` values found when computing the statistic. When omitted, its assume to have a value of 0, i.e. that the value was defined in each DLF record.

```
<!ELEMENT %LIRE.value;          (#PCDATA)          >
```

```

<!ATTLIST %LIRE.value;
    id          ID          #IMPLIED
    col NMTOKEN          #REQUIRED
    missing-cases %int.type;    #IMPLIED
        value      %number.type;    #IMPLIED
        total      %number.type;    #IMPLIED
        n          %number.type;    #IMPLIED >

```

Charts-related elements

image element

The `image` element contains information about a chart which was generated from the table data of the subreport.

It can contains a `title` which should be displayed for the chart.

The name of the generated file is contained in the `file` element.

The `image` element doesn't have any attributes.

```

<!ELEMENT %LIRE.image;          ((%LIRE.title;)?, %LIRE.file;)          >

```

file element

The `file` element contains the name of the file which contains the chart's image.

file's attribute

`format`

Contains the file type.

```

<!ELEMENT %LIRE.file;          (#PCDATA)          >
<!ATTLIST %LIRE.file;
    format          CDATA          #REQUIRED >

```

Chapter 13. Schemas Reference

This chapter documents the available schemas in the standard Lire suite. For each superservice, the base schema is explained, followed by any extended and derived schemas.

Schemas for the database Superservice

DLF Schema for Database service

Schema ID: database

Timestamp Field: time

A record in the database DLF schema represents one event in the database. This may be a connection from a client, a SQL query, etc.

Fields in the Schema

time

Type: timestamp

Defaults: 0

The time at which the event occurred.

user

Type: string

Defaults: -

The name of the user who executed the command.

remote_host

Type: hostname

Defaults: -

The host from which the user executed the command.

*action***Type:** string**Defaults:** -

The command that was executed. Commands you are likely to encounter are `connect`, `disconnect`, `shutdown` and `query`.

*database***Type:** string**Defaults:** -

The database name on which the command was executed.

*query***Type:** string**Defaults:** -

When the *command* field is a *query*, this field contains the actual SQL query that was executed.

*success***Type:** bool**Defaults:** -

Did the command succeeded?

*result***Type:** string**Defaults:** -

When the *success* field is *false*, i.e. when the command failed, this field should contains the logged error message.

connection_id

Type: int

Defaults: 0

An "appropriate" "connection label" for the backend that can be used for session analysis in conjunction with the *timestamp*, *username* and *database* fields. This can be a connection identifier, a PID, a real session ID or whatever makes sense in the particular backend.

Extended Schemas for the database Superservice

Query Type Extended Schema for Database Superservice

Schema ID: database-querytype

Base Schema: database

Module: `Libre::Extensions::Database::DatabaseSchema`

Required Fields: query

An extended schema for the database superservice which extracts the query type from the query that was made.

Fields in the Schema

querytype

Type: string

Defaults: -

The type of SQL query that was made. This will be usually be something like `SELECT`, `INSERT`, `UPDATE`, `DELETE` or other administrative commands. In the case of nested queries, this will be the type of the outer-most query.

Schemas for the dialup Superservice

DLF Schema for Dialup service

Schema ID: dialup

Timestamp Field: time

The dialup DLF schema represents each connection attempt with one DLF record.

Fields in the Schema

time

Type: timestamp

Defaults: 0

The time at which the dial up connection started.

local_number

Type: string

Defaults: -

Telephone number of the local telephone.

telephone_number

Type: string

Defaults: -

Telephone number which is being called.

connection_time

Type: duration

Defaults: 0

The duration of the dial up connection.

direction

Type: string

Defaults: -

Direction of the connection. Inbound connections are those in which is machine on which the log is recorded is called, while in outbound connections the machine makes the call.

connection_type

Type: string

Defaults: -

The type of the connection: speech or data.

connect_status

Type: string

Defaults: -

The status of the connection: busy, ring, failed or connected. A failed connection happens when the dialed telephone number does not exist (is unallocated).

hangup_status

Type: string

Defaults: -

The status of the connection: no_answer, unallocated or normal. An unallocated telephone number is a number that does not exist.

*cost***Type:** number**Defaults:** 0

The total cost of the dial up connection.

*cost_currency***Type:** string**Defaults:** -

The currency in which the cost is expressed.

Schemas for the dns Superservice

DLF Schema for DNS service

Schema ID: *dns***Timestamp Field:** *time*

Each records in the DNS DLF schema represents a query that was made to the DNS server, zone transfers or other types of administrative information isn't represented in the schema.

Fields in the Schema

*time***Type:** timestamp**Defaults:** 0

The time at which the query was processed by the server.

requesting_host

Type: hostname

Defaults: -

The host that made the request.

request

Type: hostname

Defaults: -

The content of the DNS request. DNS queries are usually about an hostname.

type

Type: string

Defaults: -

The record type that was requested. Common DNS record types are PTR, A, CNAME, etc.

resolver

Type: string

Defaults: -

This field contains `recurs` if the requests was recursive, that is probably made by a client for which we are configured as primary DNS server. Otherwise this field contains `norecurs` to denotes that the request wasn't recursive. Non-recursive requests are usually made by a DNS server which is processing a recursive request from one client.

Schemas for the dnszone Superservice

DLF Schema for DNS Zone service

Schema ID: dnszone

Timestamp Field: time

This DLF file is adequate to represent most common information about dnszone operations: approved/denied AXFR requests, completed zone transfers, loaded master and slave zones and denied dynamic DNS updates. See also the bind8_named2dlf manpage for some more info on the dnszone DLF format.

Fields in the Schema

server

Type: hostname

Defaults: -

Name of the DNS server.

time

Type: timestamp

Defaults: 0

The time of the event.

axfr_host

Type: ip

Defaults: -

IP address of the host requesting the AXFR.

axfr_zone

Type: hostname

Defaults: -

Name of the zone being requested. E.g. foo.example.com.

axfr_what

Type: string

Defaults: -

Either approved, denied or axfr.

loaded_zone

Type: hostname

Defaults: -

Name of the zone just loaded. E.g. foo.example.com.

loaded_serial

Type: number

Defaults: 0

Serial of the zone just loaded, as in the DNS SOA record. E.g. 2002071301 or 1024654055.

loaded_role

Type: string

Defaults: -

Either master or slave.

`updatedenied_host`**Type:** ip**Defaults:** -

IP address of the host requesting the update.

`updatedenied_zone`**Type:** hostname**Defaults:** -

Name of the zone being updated.

Schemas for the email Superservice

DLF Schema for Email service

Schema ID: email**Timestamp Field:** time

The email DLF schema represents delivery done by an mail transfer agent between one *one* recipient. Each DLF record contains the information related to the process of delivering between one sender and one recipient. Each exchange between one sender and one recipient will results in *one and only one* DLF record. If one sender is sending to multiple recipients, the DLF file should contains one record for each recipient.

Warning

This DLF schema is different from the other ones because it contains pre-analysed data. It is currently in redesign and will become something that will more closely resemble what you can usually find in an email log file. Different information for each phase of the mail delivery process.

That schema will probably become a derived schema from the new base schema.

Fields in the Schema

time

Type: timestamp

Defaults: 0

The time of the first event regarding that delivery. That should be the time the email enter the delivery process.

logrelay

Type: hostname

Defaults: -

The hostname on which the MTA is running.

Warning

That original intent of that field was to analyse email servers' farm which used syslog to centralize their logs. This method of analysis for multiple servers was never actually used and is considered obsolete.

queueid

Type: string

Defaults: -

The queue identifier. This should be the identifier that can be used to reconstitute the delivery process from the native log file regarding the delivery that this DLF record represents.

msgid

Type: string

Defaults: -

The content of the Message-ID header of the delivered message.

from_user

Type: string

Defaults: -

The local part of the sender's email address.

from_domain

Type: hostname

Defaults: -

The hostname of the sender's email address.

from_relay_host

Type: hostname

Defaults: -

The hostname from which the email was received. For email submitted via the **sendmail** interface or other similar mechanism, this should be `localhost`.

from_relay_ip

Type: ip

Defaults: Sending Relay IP

The ip address from which the email was received. For email submitted via the **sendmail** interface or other similar mechanism, this should be `127.0.0.1`.

size

Type: bytes

Defaults: -

The size of the message.

delay

Type: duration

Defaults: 0

The time that it took to deliver the message. This should be equivalent to the time of the delivery event minus the value of the *time* field.

xdelay

Type: duration

Defaults: 0

Warning

This field was never actually used and is obsolete.

to_user

Type: string

Defaults: -

The local part of the recipient's email address.

to_domain

Type: hostname

Defaults: -

The hostname of the recipient's email address.

to_relay_host

Type: hostname

Defaults: -

The hostname to which the email was delivered. If the recipient is a local user and this was the "final" delivery, this should be `localhost`.

to_relay_ip

Type: ip

Defaults: -

The ip address to which the email was delivered. If the recipient is a local user and this was the "final" delivery, this should be `127.0.0.1`.

stat

Type: string

Defaults: -

The status code of the delivery. Only standardized code are `sent` which is used when the delivery succeeded without error and `deferred` for when the email still wasn't delivered at the end of the log file. Other values are specific to each service.

xstat

Type: string

Defaults: Status

The complete native status message related to the email's delivery.

Extended Schemas for the email Superservice

Email Extended Schema for Email service

Schema ID: email-email

Base Schema: email

Module: Libre::Extensions::Email::EmailSchema

Required Fields: from_user, from_domain, to_user, to_domain

This is an extended schema for the Email service which adds fields containing the complete email.

Fields in the Schema

from_email

Type: email

Defaults: -

The sender's email address. That value is the *from_user* joined to the *from_domain* by an @.

to_email

Type: email

Defaults: -

The recipient's email address. That value is the *to_user* joined to the *to_domain* by an @.

Schemas for the firewall Superservice

DLF Schema for Firewall service

Schema ID: firewall

Timestamp Field: time

The firewall schema can be used for three types of logs: packet filtering firewall, intrusion detection system events and packet accounting devices.

Fields in the Schema

time

Type: timestamp

Defaults: 0

The time of the event.

action

Type: string

Defaults: -

What action was associated with that packet. Either denied or permitted.

protocol

Type: string

Defaults: -

The protocol of the packet. Common protocols are TCP, UDP or ICMP. This should be the IP protocol not higher-level application protocol.

from_ip

Type: ip

Defaults: -

The source ip address on the packet.

from_port

Type: port

Defaults: -

The source port (in the case of the TCP or UDP) protocol. This should be the ICMP type when the protocol is ICMP.

from_host

Type: hostname

Defaults: -

The hostname associated with the source IP.

rcv_intf

Type: string

Defaults: -

The receiving interface. That should be the network interface on which the packet was received. That field should contains the logical name or type of the interface.

rcv_hwaddr

Type: string

Defaults: -

The hardware address of the receiving interface. That's the MAC address in the case of an ethernet device.

to_ip

Type: ip

Defaults: -

The destination ip address on the packet.

to_port

Type: port

Defaults: -

The destination port (in the case of the TCP or UDP) protocol. This should be the ICMP code when the protocol is ICMP.

to_host

Type: hostname

Defaults: -

The hostname associated with the destination IP.

snt_intf

Type: string

Defaults: Send Intf

The sending interface. That should be the network interface on which the packet was sent (i.e. the outgoing interface).

length

Type: bytes

Defaults: -

The packet length (that is the header and payload length). This should be the total length of the stream when the event represent multiple packets, for example, in the case of packet accounting done on streams.

rule

Type: string

Defaults: -

The rule that triggered that packet to be logged, denied, permitted, etc.

msg

Type: string

Defaults: -

A message associated with that packet. This could be an attack signature detected by a Network Intrusion Detection System or anything of similar nature.

count

Type: int

Defaults: 1

The number of packets described by this event. This will be 1 in the case of a single packet. It can be higher in the case where multiple packets are compressed into one event. Remember that the length values should reflect the length of all those packets.

Schemas for the ftp Superservice

DLF Schema for FTP service

Schema ID: ftp

Timestamp Field: time

This DLF file is adequate to represent most common informations about ftp transfers. It has the equivalent information of the xferlog format supported by many ftp servers.

Each DLF record in the FTP schema represents one FTP transfer, this schema isn't adequate to represents complete FTP session.

Fields in the Schema

time

Type: timestamp

Defaults: 0

The time at which the transfer started.

transfer_time

Type: duration

Defaults: 0

The time taken by the transfer.

remote_host

Type: hostname

Defaults: -

The hostname of the client that initiated the transfer.

file_size

Type: bytes

Defaults: -

The number bytes transferred.

filename

Type: filename

Defaults: -

The filename that was transferred.

transfer_type

Type: string

Defaults: -

The method used for the transfer. This will `ascii` when ASCII conversion is used during the transfer and `binary` otherwise.

special_action_flag

Type: string

Defaults: -

A code used to represent special action accomplished by the server during the transfer. Valid codes besides the default are `compress`, `uncompress` and `tar`.

direction

Type: string

Defaults: -

This should be `upload` for incoming transfer and `download` for outgoing transfer.

access_mode

Type: string

Defaults: -

The type of authentication used. Valid values are `anonymous` when the user used anonymous login; `guest` for guest login and `authenticated` for when the user was authenticated through valid credentials.

username

Type: string

Defaults: -

The name of the authenticated user. In the case of guest or anonymous logins, this should be the email address or other identifier given by the user on logon.

service_name

Type: string

Defaults: -

That's the name through which the service was invoked. This will usually be FTP.

auth_method

Type: string

Defaults: -

Additional authentication that was done on the connection. The only defined value besides the default is `ident` for the case when the connection was authenticated through RFC1931 authentication.

auth_user_id

Type: string

Defaults: -

The user identification related to the *auth_method* mode of authentication.

completion_status

Type: string

Defaults: -

This will be `complete` when the transfer completed successfully and `incomplete` when the transfer was aborted before it completes.

Schemas for the msgstore Superservice

DLF Schema for Message Store service

Schema ID: `msgstore`

Timestamp Field: `time`

Each DLF records in the `msgstore` schema represents one command on the server. Not all fields will be meaningful for every type of action.

Fields in the Schema

time

Type: `timestamp`

Defaults: `0`

The timestamp of the event.

localserver

Type: `hostname`

Defaults: `-`

The hostname on which the message store is running. In the case of message store proxies, this will be the target server.

client_name

Type: `hostname`

Defaults: `-`

The host name of the client related to the event.

client_ip

Type: ip
Defaults: -

The ip address of the client related to the event.

user

Type: string
Defaults: -

The user name of the authenticated user associated with the connection.

protocol

Type: string
Defaults: -

The protocol used to access the message store. This will be usually one of pop or imap.

prot_cmd

Type: string
Defaults: -

The command executed by the client. Defined commands are login, badlogin, select, create, etc.

session

Type: string
Defaults: -

A session identifier used to relate the different records to one session. Session identifier can be reused.

messages_downloaded

Type: int
Defaults: 0

Number of messages downloaded.

bytes_downloaded

Type: bytes
Defaults: -

Number of bytes downloaded messages.

stored_messages

Type: int
Defaults: 0

Number of messages stored on the server.

stored_size

Type: bytes
Defaults: -

Size of the messages stored on the server.

session_duration

Type: duration
Defaults: 0

The length of the session.

Note: FIXME: When this field should be defined. On all events or only on the quit event?

status

Type: string

Defaults: -

The status of the event. This includes the error messages or other success information (like an MMP redirection).

Schemas for the print Superservice

DLF Schema for Print service

Schema ID: `print`

Timestamp Field: `time`

Each record in a the print schema contains the information about one print job.

Fields in the Schema

time

Type: timestamp

Defaults: 0

The time at which the print job started printing.

duration

Type: duration

Defaults: 0

The time the print job took to print.

client_host

Type: hostname

Defaults: -

The client hostname (or ip address) that requested the print job.

user

Type: string

Defaults: -

The name of the user who requested the print job.

job-id

Type: string

Defaults: -

The identifier assigned to the job by the printing system. No uniqueness constraint are placed on this field. For example, it is possible for a printing system to reset the job identifiers after each restart of the system.

printer

Type: string

Defaults: -

The printer's name on which the job was printed.

num_copies

Type: int
Defaults: 1

The number of copies of the job that were printed.

num_pages

Type: int
Defaults: 0

The number of pages contained in the requested print job *not counting the copies*, i.e. the number of pages in one copies of the print job.

size

Type: bytes
Defaults: -

The size of requested print job.

billing

Type: string
Defaults: -

An identifier used to relate the job to an billing account.

Extended Schemas for the print Superservice

Sheet Count Extended Schema for Print service

Schema ID: `print-sheets`

Base Schema: `print`

Module: `Libre::Extensions::Print::PrintSchema`

Required Fields: `num_pages`

This is an extended schema for the Print service which adds a field that gives the number of physical sheets printed for a job.

Fields in the Schema

num_sheets

Type: `int`

Defaults: `1`

The total number of pages printed in the print job. That is the *num_copies* times *num_pages*.

Schemas for the proxy Superservice

DLF Schema for Proxy superservice

Schema ID: `proxy`

Timestamp Field: `time`

This DLF file is adequate to represent most common informations about web proxy events. It has the same information as found in most proxy-like servers log files.

This schema is adequate for proxy servers beyond web proxys servers. It can be used for socks and other types of connection-level proxies.

The DLF schema was designed by studying the WebTrends Enhanced Log Format, squid log files and thinking about SOCKS type of server.

Fields in the Schema

time

Type: timestamp

Defaults: 0

The time at which the request was initiated.

client_ip

Type: ip

Defaults: -

The IP address of the client.

client_host

Type: hostname

Defaults: -

The hostname of the client.

user

Type: string

Defaults: -

If the client was authenticated, this field should contains the authenticated username.

duration

Type: duration

Defaults: 0

The time taken by the connection.

cache_result

Type: string

Defaults: -

Result code for the cache TCP_MISS, TCP_HIT, etc. List is available on Squid page, and in squid_access2dlf(1). All DLF converter should map their native value to the squid's one which is very complete and exhaustive.

req_result

Type: int

Defaults: 0

HTTP result of the request. e.g. 200 or 404.

protocol

Type: string

Defaults: -

The protocol of the proxied request: ftp, http, https, telnet, etc.

transport

Type: string

Defaults: -

The protocol used between the client and the proxy server. This is probably TCP, but can be UDP in some case (like SOCKS or ICP).

dst_ip

Type: ip

Defaults: -

The ip address of the destination.

dst_host

Type: hostname

Defaults: -

The hostname of the destination. In the case of web proxy, that will be the website

dst_port

Type: port

Defaults: -

Port of the destination used in IP session

operation

Type: string

Defaults: -

This field should only be defined in the case of web proxy requests. This should contains the HTTP method requested like GET or POST.

requested_url

Type: url

Defaults: -

This field should only be defined in the case of web proxy request. It should contains the URL requested on the remote server.

bytes

Type: bytes

Defaults: -

The number of bytes transferred from proxy server to the client

type

Type: string

Defaults: -

This field should only be defined for web proxy servers, it should contains the MIME type of the HTTP request's result (e.g. text/html or image/jpeg).

rule

Type: string

Defaults: -

This field contains the configuration rule's name that was used to accept or deny to request.

useragent

Type: string

Defaults: -

The useragent used by the client. E.g. 'Mozilla/4.0 (compatible; MSIE 5.0; Win32)' or 'Outlook Express/5.0 (MSIE 5.0; Windows 98; DigExt)'

result_src_code

Type: string

Defaults: -

Code qualifying the next two fields. (i.e. NONE, DIRECT, PARENT_HIT, etc.) All DLF converter should map their native value to the squid's one which is very complete and exhaustive.

result_src_ip

Type: ip

Defaults: -

The IP address of the server which handled the request, i.e. destination or other cache

result_src_host

Type: hostname

Defaults: -

The hostname of the server that handled the request and gave the result.

result_src_port

Type: port

Defaults: -

Port on referring host used in IP session.

cat_action

Type: string

Defaults: -

This field contains either the value `block` or `pass`. It is used when access control is based on content filtering.

cat_site

Type: string

Defaults: -

If the proxy server is doing content analysis, this field should contains the category for the requested website.

catlevel_site

Type: int

Defaults: 0

Level can be 1 or 2. 1 meaning "no no" categories. 2 meaning "family fun" categories. This was taken from the WELF specification.

cat_page

Type: string

Defaults: -

Like *cat_site*, but for the actual page.

catlevel_page

Type: int

Defaults: 0

Like *catlevel_site*, but for the actual page.

Schemas for the syslog Superservice

DLF Schema for Syslog superservice

Schema ID: `syslog`

Timestamp Field: `timestamp`

This is a DLF schema that can be used to represent most messages logged through syslog-like daemon.

Fields in the Schema

timestamp

Type: `timestamp`

Defaults: `0`

The timestamp of the logged event.

hostname

Type: `hostname`

Defaults: `localhost`

The hostname or ip address from which the message was received.

process

Type: `string`

Defaults: `-`

The "process" that logged the event.

pid

Type: `int`

Defaults: `0`

The PID of the originating process that was included in the message.

facility

Type: string

Defaults: -

The syslog facility (`kern`, `mail`, `local7`, etc.) to which the message was logged. This information isn't present in all syslog file formats.

level

Type: string

Defaults: -

The syslog level (`emerg`, `notice`, `debug`, etc.) to which the message was logged. This information isn't present in all syslog file formats.

message

Type: string

Defaults: -

The logged event message (after the *process* and *pid* parts are removed).

Schemas for the www Superservice

DLF Schema for WWW service

Schema ID: `www`

Timestamp Field: `time`

In this DLF schema, each record represents a request to the web server. It has the equivalent information than the common log format supported by most web servers.

Fields in the Schema

client_host

Type: hostname

Defaults: -

The hostname (or ip address) of the clients that made the request.

who

Type: string

Defaults: -

If the request was authenticated, this field should contains the name of the authenticated user. Not that there is no indication of which authentication method was used (RFC1531, WWW authentication, etc.).

http_result

Type: string

Defaults: -

The numeric result code of the request. That's is 200, 301, etc.

requested_page_size

Type: bytes

Defaults: -

The number of bytes sent to the client during the request.

http_action

Type: string

Defaults: -

The method used by the client for the request. That is usually one of GET, HEAD, POST, etc.

requested_page

Type: url
Defaults: -

The URL that was requested by the client.

http_protocol

Type: string
Defaults: -

The protocol used by the client. It should usually be one of HTTP/1.0 or HTTP/1.1.

time

Type: timestamp
Defaults: 0

The time of the request.

referrer

Type: string
Defaults: -

The content of the `Referer` header that was sent along the request. That usually represents the referring URL, that's the URL which the user was browsing when this URL was requested.

*useragent***Type:** string**Defaults:** -

The content of the `User-Agent` header that was sent along the request. That usually contains information the web browser used by the client.

*gzip_result***Type:** string**Defaults:** -

When automatic compression is used, this should contains the result code from the compression submodule.

*compression***Type:** int**Defaults:** 0

When automatic compression of the results is used, this field should contains the compression ratio achieved.

Extended Schemas for the `www` Superservice

Attack Extended Schema for `WWW` service

Schema ID: `www-attack`**Base Schema:** `www`**Module:** `Libre::Extensions::WWW::AttackSchema`**Required Fields:** `requested_page`

This is an extended schema for the `WWW` service which tries to find common web attack based on the requested URL.

Fields in the Schema

attack

Type: string

Defaults: Unknown/No Attack

The type of attack that this request represents.

Domain Extended Schema for WWW service

Schema ID: www-domain

Base Schema: www

Module: Lire::Extensions::WWW::DomainSchema

Required Fields: client_host

This is an extended schema for the WWW service which adds a country and client_domain fields based on the client host.

Fields in the Schema

client_domain

Type: hostname

Defaults: -

The domain of the client host.

country

Type: string

Defaults: Unknown

The country of the client host as determined by the top-level domain.

Robot Extended Schema for WWW service

Schema ID: `www-robot`

Base Schema: `www`

Module: `Libre::Extensions::WWW::RobotSchema`

Required Fields: None

This is an extended schema for the WWW service which adds a robot field based on information from the domain name or the *user_agent* string.

Fields in the Schema

robot

Type: string

Defaults: Unknown/No Robot

The name of the robot that made the request.

Search Engine Extended Schema for WWW service

Schema ID: `www-search`

Base Schema: `www`

Module: `Libre::Extensions::WWW::SearchSchema`

Required Fields: `referer`

This is an extended schema for the WWW service which analyze the referrals. It extract the referring sites and it also determines if it was a request from a search engine.

Fields in the Schema

referring_site

Type: string

Defaults: -

The site which referred that request. This is usually an hostname, but it can also be bookmarks for when the user used a bookmark.

*search_engine***Type:** string**Defaults:** -

The name of the search engine, when the request was referred through a search engine.

*keywords***Type:** string**Defaults:** -

The search phrase used when the request was referred through a search engine.

URL Extended Schema for WWW service

Schema ID: `www-url`**Base Schema:** `www`**Module:** `Lire::Extensions::WWW::URLSchema`**Required Fields:** `requested_page`

This is an extended schema for the WWW service which parses the requested URL and adds several fields based on this information.

Fields in the Schema

*requested_file***Type:** filename**Defaults:** -

The portion of the requested URL that represents a filename. That is everything that comes before the ? which starts the `QUERY_STRING`.

*requested_page_ext***Type:** string**Defaults:** -

The extension of the requested file.

directory

Type: filename

Defaults: -

The directory portion of the URL.

User Agent Extended Schema for WWW service

Schema ID: `www-user_agent`

Base Schema: `www`

Module: `Libre::Extensions::WWW::UserAgentSchema`

Required Fields: `useragent`

This is an extended schema for the WWW service which adds fields to access information from the *user_agent* field.

Fields in the Schema

browser

Type: string

Defaults: Unknown

The browser that was probably used to make the request as guessed from the *user_agent* field.

os

Type: string

Defaults: Unknown

The client's operating system as guessed from the *user_agent* field.

*lang***Type:** string**Defaults:** Unknown

The client's language as guessed from the locale's information contained in the *user_agent* field.

Derived Schemas for the www Superservice

User Session Derived Schema for WWW service

Schema ID: `www-user_session`**Base Schema:** `www`**Module:** `Libre::Extensions::WWW::UserSessionSchema`**Required Fields:** `time`, `client_host`**Timestamp Field:** `session_start`

This is a derived schema for the WWW service which represents user session. User sessions tracks the traversal of users through the web site. Users are tracked using their IP address and their user agent information. This is not a full proof method. For one thing, it clearly fails in the case of users having an homogeneous environment and browsing from behind a proxy server.

Possible enhancements would be to use tracking information from a cookie.

The session represent all the consequential requests made by a user. The session will end after 30 minutes where no requests was made by the user.

Fields in the Schema

*session_id***Type:** string**Defaults:** -

This field contains an arbitrary session identifier.

*session_start***Type:** timestamp**Defaults:** 0

The time at which the session started.

session_end

Type: timestamp

Defaults: 0

The time of the last request in the session.

session_length

Type: duration

Defaults: 0

The length elapsed between the first and last requests.

page_count

Type: int

Defaults: 0

The number of pages requested by the user in this session. (This excludes requests ending in .png, .jpg, .jpeg, .gif and .css.)

req_count

Type: int

Defaults: 0

This gives the number of requests by the user

first_page

Type: filename

Defaults: -

The first page requested by the user. (See `page_count` for exclusion.)

page_2

Type: filename

Defaults: -

The 2nd page requested by the user.

page_3

Type: filename

Defaults: -

The 3rd page requested by the user.

page_4

Type: filename

Defaults: -

The 4th page requested by the user.

page_5

Type: filename

Defaults: -

The 5th page requested by the user.

last_page

Type: filename

Defaults: -

The last page requested by the user.

completed

Type: bool

Defaults: -

Was this session completed? A completed session is one that we know for sure that if the user made another request, it would have been in a new session. Concretely, all requests made in the last 30 minutes of the period covered by the log file will be part of uncompleted sessions.

visit_number

Type: int

Defaults: 0

This starts at 1 for the first session of a user in the log file and will be incremented for each new session started by that user in the same log file.

IV. Lire Developers' Conventions

Chapter 14. Contributing Code to Lire

The LogReport team invites you to contribute code to Lire. We're very happy with any code contributions which work for you: it'll very likely will make life easier for other people too! We ask you to consider some points, when writing code to get distributed with Lire.

When adding new scripts, or extending and improving current Lire code, make sure you're working with the current Lire code. (When working with old code, the bug you're working on might be fixed already by somebody else.) You can get the current code by fetching our CVS from SourceForge, using the anonymously accessible pserver:

```
cvs -d:pserver:anonymous@cvs.logreport.sourceforge.net:/cvsroot/logreport login
```

When prompted for a password for anonymous, simply press the Enter key.

```
cvs -z3 -d:pserver:anonymous@cvs.logreport.sourceforge.net:/cvsroot/logreport co service
```

See also the instructions on the SourceForge website (http://sourceforge.net/cvs/?group_id=5049). Alternatively, you can peek at the Lire CVS (<http://cvs.sourceforge.net/cgi-bin/viewcvs.cgi/logreport/>) using your webbrowser.

When you'd like to change e.g. `/usr/local/bin/lr_log2report`, you'll have to hack on `cvs/sourceforge/logreport/service/all/script/lr_log2report.in`. This file will get converted to `lr_log2report` by running `./configure`. Of course, when adding scripts or extending scripts, be sure to update the scripts' manpage too.

If you'd like the LogReport team to distribute your contribution, be sure to offer it to the team under a suitable software license. Refer to the Licensing section in the *Lire FAQ* for details.

Once you've tested your script, you can send it too the LogReport development list on development@logreport.org. The LogReport team will be happy to ship your contribution with the next Lire release.

Chapter 15. Developers' Toolbox

Required Tools To Build From CVS

In order to be able to build the program from the CVS tree and make a tarball distribution the following tools are needed:

- DocBook XML 4.1.2 (<http://www.oasis-open.org/docbook/>)
- DocBook DSSSL stylesheets (<http://docbook.sourceforge.net/projects/dsssl/>)
- autotools
- Jade (<http://www.jclark.com/jade/>) or OpenJade
- lynx (<http://lynx.isc.org/>)
- GNU make
- Perl's XML::Parser module
- dia
- epsffit
- epstopdf
- xsltproc
- xmllint

For Debian woody the packages are: docbook-utils (<http://packages.debian.org/testing/text/docbook-utils.html>), docbook-xml-stylesheets, autoconf (<http://packages.debian.org/testing/devel/autoconf.html>), automake1.4 (<http://packages.debian.org/testing/devel/automake.html>), autotools-dev (<http://packages.debian.org/testing/devel/autotools-dev.html>), jade (<http://packages.debian.org/testing/text/jade.html>), lynx (<http://packages.debian.org/testing/web/lynx.html>), make (<http://packages.debian.org/testing/devel/make.html>) and libxml-parser-perl.

You need automake version 1.4. Building using automake 1.7 will very likely not work.

Accessing Lire's CVS

Make sure you've got an account on *SourceForge* (<http://www.sourceforge.net>). Get yourself added to the logreport project. (Joost van Baal joostvb@logreport.org can do this for you.) Make sure your ssh public key is on the sourceforge server.

A full backup of the complete LogReport CVS as hosted on SourceForge is made weekly and written to `hibou:/data/backup/cvs/`.

CVS primer

If you have a Unix like system, make sure you have this

```
CVSROOT=:ext:cvs.logreport.sourceforge.net:/cvsroot/logreport
CVS_RSH=ssh
```

in your shell environment.

Of course, you could do something like

```
$ eval `ssh-agent`
$ ssh-add
```

to get a nice ssh-agent running.

Now do something like

```
$ cd ~/cvs-sourceforge/logreport
$ cvs co service
```

There are also repositories called 'docs' and 'package'. In the former the webpages are located and in the latter the package files for Debian GNU/Linux and other distributions are kept.

Files can then be edited and committed:

```
$ vi somefile
$ cvs commit somefile
```

and get flamed ;)

Subscribe yourself to the commit list (commit-request@logreport.org), to get all commit messages, along with unified diffs.

SourceForge

Mailing Lists

Chapter 16. Coding Standards

Indentation should be four spaces. No tabs please.

See also Message-Id: <1028238571.1085.185.camel@Arendt.Contre.COM> on the development mailing list for some rationale on coding standards.

Shell Coding Standards

Shell scripts should run `-e`. Shell script should be portable. Refer to http://doc.mdcc.cx/doc/autobook/html/autobook_208.html (http://doc.mdcc.cx/doc/autobook/html/autobook_208.html).

Perl Coding Standards

Perl scripts should use `strict`, and run `-w`. Documentation should come in `.pod` format, documentation about script internals should be in perl comments.

No `&` in function call unless necessary.

Split long lines using hard return; try to respect the 72th column margin (this is kind of a soft limit).

Refer to the `Lire::Program` manpage for more details.

Chapter 17. Making Lire “Test-infected”

Soon after the release of Lire 1.2.1, unit tests were introduced in the source tree. Unit tests helps development in several way the most important one being that you can make changes to code and run the unit tests to make sure that nothing was broken by that changes.

You can find helpful resources on Unit testing on the PerlUnit home page (<http://perlunit.sourceforge.net/>) as well as on the JUnit home page (<http://perlunit.sourceforge.net/>) from which it was inspired.

Unit Tests in Lire

PerlUnit

Unit tests are written using the PerlUnit framework. You’ll to install version 0.24 or later of the Test::Unit to run the unit tests.

Note: Unfortunately, PerlUnit needs version 5.6.0 or later of perl. So you can’t run the unit tests on previous version of perl, although Lire should be able to run under 5.00503.

Writing Tests

General information on using the PerlUnit framework can be found in the Test::Unit man page. Information on writing individual test cases can be found in the Test::Unit::TestCase man page.

Tests for individual modules should be defined in tests::*module*Test package. You can omit the Lire:: prefix and you can inline intermediary package names. For example, the unit tests of the Lire::ExtendedDlfSchema module are in the tests::ExtendedDlfSchemaTest package and the tests of the Lire::AsciiDlf::Timegroup module are in the tests::AsciiDlfTimegroupTest package.

The Lire::Tests namespace is reserved for extensions to the PerlUnit framework that will be used to provide “fixtures” and “assertions” that are of general use for common Lire extensions.

Note: This section will be expanded as common patterns for writing unit test for DLF converters, analyzers and other common Lire extension are developped.

Running Tests

To run tests, you use the **TestRunner.pl** script included with the PerlUnit distribution. You’ll need to add the directory containing the Lire libraries to perl library path. For example, if you have **TestRunner.pl** in your `~/bin` directory, you can run a test case from the top level source directory like this:

```
$ perl -Iall/lib ~/bin/TestRunner.pl tests::ExtendedDlfSchemaTest
```

`tests::ExtendedDlfSchemaTest` can be replaced by your `TestCase` module.

Some “Best Practices” on Unit Testing

This section lists some effective tips on how to make effective use of Unit tests in common development situations on Lire.

Changing interface/implementation. Before changing a module interface or implementation, make sure that this module has test cases and that it passes its tests before changing the implementation. This way you can know that your changes didn’t break anything.

Debugging. A good opportunity for writing tests is when bugs are reported. Before trying to chase the bug using the debugger or adding `print` statements, write a test case that will fail as long as the bug isn’t fixed. This achieves two purposes: first, you’ll know when the bug is fixed as soon as the test passes; secondly, we now have a test case that will warn us if we regress and the bug reappears.

Chapter 18. Commit Policy

Make sure your changes run on your own platform before committing. Try not to break things for other platforms though. Currently, Lire supported platforms are GNU/Linux (Debian GNU/Linux, Red Hat Linux, Mandrake Linux), FreeBSD, OpenBSD and Solaris.

Documentation should be updated ASAP, in case it's obsolete or incomplete by new commits.

CVS Branches

When doing major architectural changes to Lire, branches in CVS are created to make it possible to continue to fix bugs and to add small enhancements to the stable version while development continues on the unstable version. This applies mainly to the service repository. The doc and package repositories generally don't need branching.

BTW: A nice CVS tutorial is available in the Debian cvsbook package.

Hands-on example

A branching gets announced. Be sure to have all your pending changes committed before the branching occurs. After a branch has been made, one can do this:

```
$ cd ~/cvs-sourceforge/logreport
$ mv service service-HEAD
$ cvs co -r lire-20010924 service
$ mv service service-lire-20010924
```

or (with the same result)

```
$ mv service service-HEAD
$ cvs co -r lire-20010924 -d service-lire-20010924 service
```

Now, when working on stuff which should be shipped in the coming release, one should work in service-lire-20010924. When working on stuff which is rather fancy and experimental, and which needs a lot of work to get stabilized, one should work in service-HEAD.

Naming, what it looks like

Here is what branches schematically look like:

```
release-20010629_1 ---> lire-unstable-20010703 ---> HEAD
      \
      \
lire-20010630 ---> lire-stable-20010701
```

In this diagram a branch named `lire-20010630` was created from the `release-20010629_1` tag. `lire-unstable-20010703` is another tag on the *trunk* (the *trunk* is the main branch). `HEAD` isn't a real tag, it always points to latest version on the trunk.

Creating a Branch

To create a branch, one runs the command `cvcs rtag -b -r release-tag branch-name module`. Note that this command doesn't need a checkout version of the repository. For example, to create the `release-20010629_1-bugfixes` branch in the service repository, e.g. to backport bugfixes to version `20010629_1`, one would use `cvcs rtag -b -r release-20010629_1 release-20010629_1-bugfixes service`. When ready for release, this could get tagged as `release-20010629_2`.

The *release-tag* should exist before creating the branch. In case you want to branch from `HEAD`, use `-r HEAD`. E.g. `cvcs rtag -b -r HEAD release_1_1-branch service`. Once Lire 1.1 gets released, tag it as `release_1_1`.

Accessing a Branch

To start working on a particular branch, you do `cvcs update -r branch-name`. For example, to work on the `release_1_1-branch` branch, you do in your checked out version, `cvcs update -r release_1_1-branch`. This will update your copy to the version `release_1_1-branch` and will commit all future changes on that branch.

Alternatively, you can also specify a branch when checking out a module using `cvcs co -r branch-name module`. For example, you could checkout the stable version of Lire by using `cvcs co -r release_1_1-branch service`.

To see if you are working on a particular branch, you can use the `cvcs status file` command. For example, running `cvcs status NEWS` could show:

```
=====
File: NEWS                               Status: Up-to-date

Working revision: 1.74
Repository revision: 1.74 /cvsroot/logreport/service/NEWS,v
Sticky Tag: lire-stable
Sticky Date: (none)
Sticky Options: (none)
```

The branch is indicated by the `Sticky Tag: keyword`. If its value is `(none)` you are working on the `HEAD` branch.

To work on the `HEAD`, you remove the sticky tag by using the command `cvcs update -A`.

Merging Branches on the Trunk

You can bring bug fixes and small enhancements that were made on a branch into the unstable version on the trunk by doing a merge. You do a merge by using the command **cv^s update -j *branch-to-merge*** in your working directory of the trunk. Conflicts are resolved in the usual CVS way. For example, to merge the changes of the stable branch in the development branch, you would use **cv^s update -j lire-stable**.

You should tag the branch after each successful merge so that future changes can be easily merged. For example, after merging, you do in a checked out copy of the `lire-stable` branch: **cv^s tag lire-stable-merged-20010715**. In this way, one week later we can merge the week's changes of the stable branch into the unstable branch by doing **cv^s update -j lire-stable-merged-20010715 -j lire-stable**.

Chapter 19. Testing

One week before release the software should be tested on all supported platforms. In between releases the system gets tested on various platforms on an ad hoc basis. When testing, use the to-be-released tarball. Run **make dist** to generate such a tarball. Releases are done about every month.

Especially when changes to the Lire core have been made, the "test" superservice can be handy, for easy setting up of tests of your code.

Chapter 20. Making a Release

Before making an official Lire release, it should have been tested on all supported platforms. A release shouldn't be made unless Lire builds, installs and generates an ASCII report from all supported log files on all supported platforms. If this is not the case, the release should be delayed until this is fixed.

Making a new release of Lire involves many steps:

1. Writing the final version number in NEWS.
2. Tagging the CVS tree.
3. Building the "Standard" Lire tarball.
4. Building the "Full" Lire tarball.
5. Building the Debian GNU/Linux package.
6. Building the RPM package.
7. Making sure the FreeBSD package gets updated.
8. Uploading the tarballs and making packages available.
9. Advertising the release.

Setting version in NEWS file, checking ChangeLog

Inbetween releases, the NEWS file generally reads "version in cvs". This should of course be changed to e.g. "version 20011205".

Since August 25, we maintain our ChangeLog file. Make sure the ChangeLog in the toplevel directory is not too big. If needed, split off a chunk and move it to doc/. The ChangeLog is autogenerated from the CVS commits, using the `cvs2cl` tool. One could e.g. run `cvs2cl --prune --stdout -l "-d \>yesterday" -U ../CVSROOT/users`.

Tagging the CVS

Run e.g. `cvs tag release-20011017`.

Building The "Standard" Tarball

The "Standard" tarball is the one that contains only the code needed to build and install Lire. It doesn't contain required libraries like expat or XML::Parser. There is also a "Full" version of the tarball that includes those libraries.

1. Start from a fresh copy by running the command `make maintainer-clean-recursive` in the directory where you checked out Lire's source code.

- a. Make sure that there are no tarballs in the `extras` subdirectory.
2. Set the version and prepare the source tree by running the command `./bootstrap`. (You can overwrite the pre-cooked version by doing e.g. `echo `date +%Y%m%d`-R-f-jvb-1 > VERSION`. Make sure your version hasn't got too many characters. Non-GNU tar chokes if pathnames in the archive are too long.)
3. Generate Makefiles
 - a. Run `./configure`
4. Build Lire and create the tarball by running the command `make distcheck`.
 This will build a tarball `lire-version.tar.gz` and then make sure that the content of this tarball can be built and installed. If that command fails, Lire isn't ready to be released. Fix the errors before making the release.
5. Sign Lire's tarball with your public key. To do this with GnuPG, run `gpg --detach-sign --armor lire-version.tar.gz`.
 A file `lire-version.tar.gz.asc` will be created. Publish this file together with the tarball. Now, people downloading the tarball can verify its integrity by downloading the `.asc` as well as your public key, and running `gpg --verify lire-version.tar.gz.asc`.

Building The "Full" Tarball

The "Full" tarball is the one that contains the required Perl and XML libraries along with Lire's source code. This tarball should be called `lire-full-version.tar.gz`.

1. If you built the "Standard" tarball, you should move it someplace else along with its signature, because this procedure will overwrite it.
2. Start from a fresh copy by running the command `make maintainer-clean-recursive` in the directory where you checked out Lire's source code.
3. Add the tarballs of the required libraries in the `extras` subdirectory. These tarballs can be downloaded using `wget`.
 - a. `wget http://www.cpan.org/modules/by-module/XML/XML-Parser.2.30.tar.gz`
 - b. `wget http://prdownloads.sourceforge.net/expat/expat-1.95.2.tar.gz`
4. Set the version and prepare the source tree by running the command `./bootstrap`.
5. Build Lire.
 - a. Run `./configure`
 - b. Run `make`
6. Create the tarball by running the command `make` followed by the command `make distcheck`.

This will build a tarball and then make sure that the content of this tarball can be built and installed. If that command fails, Lire isn't ready to be released. Fix the errors before making the release.

7. Rename the generated tarball to `lire-full-version.tar.gz`.
8. Sign Lire's tarball with your public key. To do this with GnuPG, run **gpg --detach-sign --armor lire-full-version.tar.gz**.

A file `lire-full-version.tar.gz.asc` will get created. Publish this file, together with the tarball. Now, people downloading the tarball can verify its integrity by downloading the `.asc` along with it, as well as your public key and running **gpg --verify lire-full-version.tar.gz.asc**.

Building The Debian Package

This is a raw unformatted dump of what we did to build and upload the Lire `.deb`.

```
$ cd ~/cvs-sourceforge/logreport/package/debian
$ vi changelog

:r !date --rfc

$ cd /usr/local/src/debian/lire/debian/20010219
```

Run something like `'DIB_V=20020214 DIB_P=lire DIB_TARDIR=./archive/ ./debian-install-build'`.

This does:

```
$ cd /usr/local/src/debian/lire/debian/20010219
$ cp \
~/cvs-sourceforge/logreport/service/lire-20010219.tar.gz .

$ tar xzf lire-20010219.tar.gz
$ cd lire/20010418
$ mv lire-20010418 lire-20010418.orig
$ tar xzf lire-20010418.tar.gz
$ cd lire-20010418
$ mkdir debian
$ cp \
~/cvs-sourceforge/logreport/package/debian/[^C]* debian/
```

Export the shell environment variable `EMAIL`, it should hold your email address, as it is to appear in the maintainers field of the package. (One could use `'dh_make --copyright gpl -s'` on first time debianizing.) Build the `.deb` by running:

```
$ debuild 2>&1 | tee /tmp/build
```

Check the `.deb`:


```
$ debc | less
```

You might also want to test whether the Debianized sources build fine on other machines: copy `diff.gz`, `orig.tar.gz` and `.dsc`. Then do

```
$ dpkg-source -x lire_*.dsc
$ cd lire-version
$ dpkg-buildpackage -rfakeroot
```

After having *really* tested it (`dpkg -i`, `purge`, etc.), optionally install it on any local apt-able websites you might have (Joost has one on <http://mdcc.cx/debian/>) and upload it to hibou's apt-able archive:

```
$ scp lire_20010418-1_all.deb \
  hibou.logreport.org:/var/www/logreport.org/pub/debian/dists/local/contrib/binary-all/admin/

$ scp lire_20010418*.gz \
  hibou.logreport.org:/var/www/logreport.org/pub/debian/dists/local/contrib/source/admin/
$ scp lire_20010418*.*s* \
  hibou.logreport.org:/var/www/logreport.org/pub/debian/dists/local/contrib/source/admin/
```

Move the old debian stuff on hibou to `hibou:/pub/archive/debian/`. Update the Packages file by running

```
$ cd /var/www/logreport.org/pub/debian
$ make
```

To upload it to the official debian mirrors:

```
vanbaal@gelfand:/usr...src/debian/lire/20010418% date; \
  dupload lire_20010418-1_i386.changes
Thu Apr 19 14:27:38 CEST 2001
Uploading (ftp) to ftp.uk.debian.org:debian/UploadQueue/
[ job lire_20010418-1_i386 from lire_20010418-1_i386.changes New dpkg-dev, announcement will
  lire_20010418.orig.tar.gz, md5sum ok
  lire_20010418-1.diff.gz, md5sum ok
  lire_20010418-1_all.deb, md5sum ok
  lire_20010418-1.dsc, md5sum ok
  lire_20010418-1_i386.changes ok ]
Uploading (ftp) to uk (ftp.uk.debian.org)
  lire_20010418.orig.tar.gz 163.1 kB , ok (12 s, 13.59 kB/s)
  lire_20010418-1.diff.gz 32.6 kB , ok (3 s, 10.88 kB/s)
  lire_20010418-1_all.deb 222.4 kB , ok (16 s, 13.90 kB/s)
  lire_20010418-1.dsc 0.6 kB , ok (0 s, 0.60 kB/s)
  lire_20010418-1_i386.changes 1.2 kB , ok (1 s, 1.22 kB/s) ]
```

check [ftp://ftp.uk.debian.org/debian/UploadQueue/](http://ftp.uk.debian.org/debian/UploadQueue/)

Building The RPM Package

Making sure the FreeBSD port gets updated

Since August 21, 2002, Lire is in the FreeBSD ports collection. Edwin Groothuis has build a FreeBSD port. Ask him if he's available for updating his port. Alternatively, Cédric Gross might be able to help. If not, the LogReport team should take care of it, and submit a Problem Report to the FreeBSD system, asking for inclusion of the updated port.

Uploading The Release

To release a new distribution, publish the tarball on various places and send an announcement to the <announcement@logreport.org> mailinglist, stating the most interesting new features. Furthermore, add a newsitem to the news list of the website. We'll describe how to upload the tarball to various places.

The LogReport Webserver

Upload the tarball to the pub area on the LogReport server. The area is mirrored automatically by the download.logreport.org servers; updates are done every 6 hours. Upload like this:

```
$ scp lire-20001211.tar.gz hibou.logreport.org:/var/www/logreport.org/pub/
```

On hibou, do:

```
$ cd /var/www/logreport.org/pub
$ chown .www lire-20010525.tar.gz
$ chmod g+w lire-20010525.tar.gz

$ tar xzf lire-20001211.tar.gz
$ rm current && ln -s lire-20001211 current
$ rm current.tar.gz && ln -s lire-20001211.tar.gz current.tar.gz
$ rm -rf lire-20001205
$ mv lire-20001205.tar.gz archive
```

Update the README.txt file: Run

```
$ cd /var/www/logreport.org/pub
$ ( echo \
  'current is the latest official release'; echo; ls -lF c* ) > README.txt
```

Check the symlink to the documentation stuff in the tarball.

Check if the stuff in <http://logreport.org/pub/docs> is still up to date.

Advertising The Release

SourceForge

In order to release a distribution on SourceForge (SF), you login with your SF account on the SF website. Once logged in you go to the project webpage (<https://sourceforge.net/projects/logreport/>) and choose *Admin*. Down at the bottom of that page is a *[Edit/Add File Releases]* link (click it (https://sourceforge.net/project/admin/editpackages.php?group_id=5049)).

You are able to edit packages, like the Lire package in the LogReport project. To add a new release, choose *[Add Release]*. As a release name uses the date, like 20010407, assign it to the Lire package and then use the *Create This Release* button to makes it effective.

The next page shows 4 steps of which only one (step 2) is not straightforward. In that step you assign files to a release (.tar.gz, .deb, .rpm). These files should be uploaded to SF's Upload anonymous FTP site at <ftp://upload.sourceforge.net/incoming/>. Make sure the file is placed in the `/incoming` directory. Click *Refresh View* in Step 2 to add the files you uploaded to the FTP site. Check the files belonging to the release and Click *Add Files*. In step 3, set Processor to any. Set file type to .deb and source.gz. Click update/refresh. Step 4: send notice. Done.

Freshmeat.net

On Freshmeat.net, releases are not released, but get announced only. These announcements attract a lot of attention. The webpage for the Lire package can be found at <http://freshmeat.net/projects/lire/>.

To announce a new release go to Lire - development branch (<http://freshmeat.net/branches/14593/>) webpage. Choose *Add Release* from the Project pull down menu in the light blue area. The rest is very straightforward.

Chapter 21. Website Maintenance

We give hints on how to upgrade the website: installing stuff from current CVS on <http://logreport.org> (<http://logreport.org/>).

Commits to the CVS tree of the website are automatically propagated to hibou. For more information on the markup language of the website, see the WJML documentation (<http://logreport.org/doc/wjml/>).

Documentation on the LogReport Website

Be sure the links to stuff under `/pub/current` are still alive. E.g. the files `TODO`, `dev-manual.html` and `user-manual.html` are linked to.

Publishing the DTD's

The DTD's are published as HTML on the website by using `hibou:/usr/local/src/dtdparse/dtdparse-2.0b2-LogReportPatched.tar.gz`, which is a patched version of Norman Walsh's `dtdparse` utility. Before the utility is run, make sure that the DocBook DTD is not included in the parsing process, because the DocBook DTD should not be published. This is done by changing the line:

```
<!ENTITY % load.docbookx      "INCLUDE"                >
```

into:

```
<!ENTITY % load.docbookx      "IGNORE"                  >
```

The webpages are then generated with:

```
perl ~/dtdparse-2.0b2-patched/dtdparse.pl --title "XML Lire Report Markup Language" --output  
perl ~/dtdparse-2.0b2-patched/dtdformat.pl --html lire.xml
```

The resulting `lire` directory can be tar-ed, gzipped and unpacked again on hibou in the directory `/var/www/logreport.org/pub/docs/dtd/`.

The other two DTD's are HTML-ized similarly, but remember to change the title when running **dtdparse.pl**.

Chapter 22. Writing Documentation

Documentation which comes with the Lire tarball is maintained in four formats: plain text, Perl POD, DocBook XML and UML diagrams. We'll talk about all four of these here.

Plain Text

Small files like `README`, `NEWS`, `AUTHORS`, `doc/BUGS`, and `doc/TODO` are traditionally maintained in plain text format. We adhere to this common practice.

Perl's Plain Old Documentation: maintaining manpages

We use Perl's pod (plain old documentation) for manpages. Every file installed with Lire in `/usr/bin/` must have a manpage. Every file installed in `/usr/share/perl5/Lire/` and `/usr/lib/lire/` should have a manpage. It would be nice if the files in `/etc/lire/` were documented in manpages too. And perhaps for some files in `/usr/share/lire/xml/`, `/usr/share/lire/reports/`, `/usr/share/lire/filters/` and `/usr/share/lire/schemas/` manpages could be useful.

Since the files in `/usr/bin/` are commands, ran by Lire users, the manpages describing these should focus on the user perspective. Describing the inner workings and implementations of the commands is less important than describing why someone would want to run the specific command. If there's need to make some remarks on the internals of these scripts, a section called `DEVELOPERS` could be added to the manpage. The perl modules installed in `/usr/share/perl5/Lire/` and the commands in `/usr/lib/lire/` are not intended as interfaces for the user. Only people wanting to change or study the operation of Lire itself will interact with these files; therefore, the manpages should explain the inner workings and implementations of these files. The configuration files in `/etc/lire/` might be changed by users. These should be properly documented: in manpages or in the *Lire User's Manual*.

Docbook XML: Reference Books and Extensive User Manuals

The main documentation of the Lire project is done in DocBook XML 4.1.2. E.g. this document is maintained in DocBook XML, as is the *Lire User's Manual* and the *Lire FAQ*. The *Lire User's Manual* has more information about DocBook.

After editing the *Lire Developer's Manual* or the *Lire User's Manual*, you should run **make check-xml** to make sure the document is still a valid DocBook document. You should fix any errors before committing your changes.

If everything went right, documentation is built in txt, tex, html and pdf format by running **make dist**, or just **make** in `doc/`. We give some hints which might be helpful in case you have to build the documentation manually.

To generate PDF:

```
$ jade -t tex -d /path/to/DSSSL/docbook/print/docbook.dsl roadmap.xml
$ pdfjadetex roadmap.tex
```

The last step is actually done two or three times to resolve page numbers.

To generate HTML:

```
$ jade -t sgml -d html.dsl roadmap.xml
```

And now you can use the `html.dsl` in the `doc/source` directory. (If necessary, adjust it to reflect the location of your DSSSL stylesheets). Use `lynx` to generate TXT output from HTML with:

```
$ lynx -nolist -dump roadmap.html > roadmap.txt
```

UML Diagrams

The Unified Modelling Language (UML) is a set of definitions on how design diagrams are composed. These diagrams will help to document and understand the internals of Lire, and are used as such in this manual.

UML Editing

Several UML editors are available, but few are open source. Among these are Dia (general diagram editor for Gnome), ArgoUML (written in Java) and UML Modeler (<http://uml.sf.net/>) (UML specific editor for KDE). The latter was used to draw the diagrams found in `CVS /service/doc/uml-diagrams`.

Diagram Types

UML supports several diagram types. Two important ones are *class diagrams* and *sequence diagrams*. The former is used to depict the relations and associations between classes. Classes can be programs or modules. The latter is used to show how certain tasks are performed in time, and can be used to model the sequence of events.

V. Implementation Details

Chapter 23. Report Generation: AsciiDlf

Report generation is done by `Lire::AsciiDlf`. The modules below `Lire::AsciiDlf::` are partly reflected in `Lire::Merge::`. A first start of documenting this has been made in the `Lire::AsciiDlf::Group`, `Lire::AsciiDlf::DlfInfo`, `Lire::AsciiDlf::Timegroup`, and `Lire::AsciiDlf::GroupOp` manpages. As of this writing (September 2002), a lot of internals are still undocumented, though.

Chapter 24. Issues with Report Merging

In some cases, a merged report doesn't display the right information. We outline some worst case scenarios, and justify our implementation.

Suppose log file 1 ("requests" with "sizes") looks like:

request	size
A	12
B	11
C	10

while log file 2 looks like:

request	size
D	3
E	2
F	1

We report on the top 2 biggest requests, so the report from log 1 looks like:

request	size
A	12
B	11

while the report from log 2 would look like:

request	size
D	3
E	2

Now we change the superservice.cfg file to list the top-4 biggest items. A naive merge would lead to:

request	size
A	12
B	11
D	3
E	2

Of course, this should've been:

request	size
---------	------

request	size
A	12
B	11
C	10
D	3

This effect does not occur when keeping the top-limit to the same value. However, when we're not reporting on distinct values in the log, but are summing, more horrible things might happen. Consider this: We want to report on the total size by client. Logs look like:

client	size
a	12
b	11
c	10

and

client	size
d	4
e	4
c	3

Reports from these logs would look like:

client	size
a	12
b	11

client	size
d	4
e	4

After naively merging, one would get:

client	size
a	12
b	11

In fact, the complete report should look like:

client	size
--------	------

client	size
c	13
a	12

Luckily, the Lire merging algorithm is not *this* naive: in fact, the XML reports store a little more records than actually needed. This heuristic trick leads to sane merged reports in most cases. However, since this is merely a heuristic trick, it is no waterproof guarantee.

See the description of the `guess_extra_entries` routine in the `Lire::AsciiDif::Group` manpage for more implementation details.

Chapter 25. Overview of Lire scripts

An overview of the main scripts involved. **lr_spoold** is the engine behind a Lire Online Responder.

lr_log2report is the main Lire command line interface. The **lr_log2xml** command is a helper scripts.

The **lr_xml2report** command can be used by the user to merge XML reports. The **lr_sql2report** is not

yet fully integrated in the Lire system. The **lr_rawmail2mail** command manages a Lire client setup. The

lr_cron is fired of by **cron**, in a cron-driven setup.

```
lr_spoold
|
\ _ lr_check_service
\ _ lr_spool
    |
    \ _ lr_processmail
        \ _ lr_getbody
            |
            \ _ lr_log2mail
                |
                \ _ lr_inflate
                \ _ lr_log2xml
                    |
                    \ _ lr_xml2mail
                        | \ _ lr_xml2report
                        | \ _ lr_mail
                        |
                        \ _ lr_archive_log
```

```
lr_log2report
\ _ lr_inflate
\ _ lr_log2xml
\ _ lr_xml2report
```

```
lr_log2xml
\ _ <LR_SERVICE>2dlf
\ _ lr_dlf2xml
\ _ (lr_dlf2sql)
```

```
lr_xml2report
\ _ lr_xml_merge
\ _ lr_xml2<OUTPUTFORMAT>
    \ _ lr_xml2chart
```

```
lr_sql2report
\ _ lr_sql2dlf
\ _ lr_dlf2xml
\ _ lr_xml2report
```

```
lr_rawmail2mail
\ _ lr_getbody
\ _ lr_deanonymize
\ _ lr_xml2mail
```

```
lr_cron  
\_ lr_log2mail
```

lr_spoold monitors a Maildir spool for each responder address. lr_processmail processes an email message with a compressed log file attached. Refer to the manpages for the gory details.

Chapter 26. Source Tree Layout

Service specific scripts should reside in `$CVSROOT/service/<service>/script/`. Configuration data should be in `<service>/etc/`. Service specific documentation in `<service>/doc/`.

Furthermore, in each subdirectory there should be a `Makefile.am`.

Glossary

Definitions of particular terms used in Lire.

DLF

See: Distilled Log Format

Distilled Log Format

Example 1. DNS DLF Excerpts

```
1010912574 10.0.0.2 121.68.134.195.in-addr.arpa PTR recurs
1010912574 10.0.0.2 121.68.134.195.in-addr.arpa PTR recurs
1010912592 10.0.0.2 120.67.123.212.in-addr.arpa PTR recurs
1010912600 10.0.0.2 207.7.178.212.in-addr.arpa PTR recurs
1010912600 10.0.0.2 tr16.kennisnet.nl A recurs
1010912616 10.0.0.2 120.67.123.212.in-addr.arpa PTR recurs
1010912630 10.0.0.2 207.7.178.212.rbl.maps.vix.com ANY recurs
1010912630 10.0.0.2 NLnet.nl ANY recurs
```

This is the generic log format used by Lire to normalise the log files from different products.

Currently, this normalised log is a simple ASCII format where each event is represented by one line. The information about the event is represented by fields separated by spaces. All non-printable ASCII characters are replaced by ?. Spaces in a field's value are replaced by _ (an underscore). Each line must have the same number of fields. A DLF file doesn't contain any header information. Example 1 shows an excerpt of a DNS DLF file.

See Also: Superservice, DLF Schema.

DLF Schema

Information about the order of the fields in a DLF file, their types and what they represent is specified in the DLF's schema. Schemas are defined in XML files using the Lire DLF Schema Markup Language (LDSML). Lire's offers an API (only in Perl for now) to programmatically access the information of a schema.

Log files of many different products can share a common DLF schema that makes Lire's reports easily comparable.

Report

A report is what is generated by Lire. It consists of several subreports. Those subreports can be grouped into sections. The report is computed from the DLF file (and not the native log file) based on a configuration file which describes the subreports that make up the final report along with their parameters. (Consult the *Lire User's Manual* section *Customizing Lire* for more information.)

Service

Put simply, a service is a specific application that produces log files. It is usually the case that one application will be equivalent to one service. For example, the mysql service is used to process MySQL's log files.

But more precisely, a service is a specific log format. For example, the common service can be used for all web servers that support the Common Log Format. Similarly, the welf service can be used to process firewall log files written using WebTrends Enhanced Log Format.

In order to generate a report on it, the native log will be converted to the appropriate superservice's DLF schema

Subreport

A subreport is a particular view on the DLF log's data. Subreports are defined in XML files using the Lire Report Specification Markup Language (LRSML). (Although it defines subreports, it is called a Report Specification because a report is made up out of several subreports.) Example of a subreport would be *Requests by Hours of the Day*.

Subreports are defined for a particular DLF schema.

Superservice

A superservice is a collection of services that share the same DLF schema and report. It is used to group together applications (services) that offer the same kind of functionality.

Lire currently supports eight superservices: database, dns, email, firewall, ftp, print, proxy, and www.